

**Anti-Fetuin A Antibody**  
Rabbit polyclonal antibody to Fetuin A  
Catalog # AP61487

**Specification**

---

**Anti-Fetuin A Antibody - Product Information**

Application	WB
Primary Accession	<a href="#">P02765</a>
Other Accession	<a href="#">P29699</a>
Reactivity	Human, Mouse, Rat, Bovine, SARS
Host	Rabbit
Clonality	Polyclonal
Calculated MW	39341

**Anti-Fetuin A Antibody - Additional Information**

**Gene ID** 197

**Other Names**

FETUA; Alpha-2-HS-glycoprotein; Alpha-2-Z-globulin; Ba-alpha-2-glycoprotein; Fetuin-A

**Target/Specificity**

Recognizes endogenous levels of Fetuin A protein.

**Dilution**

WB~~WB (1/500 - 1/1000)

**Format**

Liquid in 0.42% Potassium phosphate, 0.87% Sodium chloride, pH 7.3, 30% glycerol, and 0.09% (W/V) sodium azide.

**Storage**

Store at -20 °C. Stable for 12 months from date of receipt

**Anti-Fetuin A Antibody - Protein Information**

**Name** AHSG

**Synonyms** FETUA

**Function**

Promotes endocytosis, possesses opsonic properties and influences the mineral phase of bone. Shows affinity for calcium and barium ions.

**Cellular Location**

Secreted.

**Tissue Location**

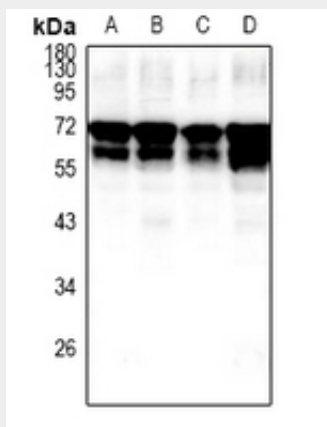
Synthesized in liver and selectively concentrated in bone matrix. Secreted in plasma. It is also found in dentin in much higher quantities than other plasma proteins

### Anti-Fetuin A Antibody - Protocols

Provided below are standard protocols that you may find useful for product applications.

- [Western Blot](#)
- [Blocking Peptides](#)
- [Dot Blot](#)
- [Immunohistochemistry](#)
- [Immunofluorescence](#)
- [Immunoprecipitation](#)
- [Flow Cytometry](#)
- [Cell Culture](#)

### Anti-Fetuin A Antibody - Images



Western blot analysis of Fetuin A expression in PC12 (A), AML12 (B), HEK293T (C), H1792 (D) whole cell lysates.

### Anti-Fetuin A Antibody - Background

KLH-conjugated synthetic peptide encompassing a sequence within the center region of human Fetuin A. The exact sequence is proprietary.