

**Anti-CD339 Antibody**  
Rabbit polyclonal antibody to CD339  
Catalog # AP61484

## Specification

---

### Anti-CD339 Antibody - Product Information

Application	WB
Primary Accession	<a href="#">P78504</a>
Other Accession	<a href="#">O9OXX0</a>
Reactivity	Human, Mouse, Rat
Host	Rabbit
Clonality	Polyclonal
Calculated MW	133799

### Anti-CD339 Antibody - Additional Information

Gene ID 182

#### Other Names

JAGL1; Protein jagged-1; Jagged1; hj1; CD339

#### Target/Specificity

Recognizes endogenous levels of CD339 protein.

#### Dilution

WB~~WB (1/500 - 1/1000)

#### Format

Liquid in 0.42% Potassium phosphate, 0.87% Sodium chloride, pH 7.3, 30% glycerol, and 0.09% (W/V) sodium azide.

#### Storage

Store at -20 °C. Stable for 12 months from date of receipt

### Anti-CD339 Antibody - Protein Information

Name JAG1

Synonyms JAGL1

#### Function

Ligand for multiple Notch receptors and involved in the mediation of Notch signaling (PubMed:<a href="http://www.uniprot.org/citations/18660822" target="\_blank">18660822</a>, PubMed:<a href="http://www.uniprot.org/citations/20437614" target="\_blank">20437614</a>). May be involved in cell-fate decisions during hematopoiesis (PubMed:<a href="http://www.uniprot.org/citations/9462510" target="\_blank">9462510</a>). Seems to be involved in early and late stages of mammalian cardiovascular development. Inhibits myoblast differentiation (By similarity). Enhances fibroblast growth factor-induced angiogenesis (in vitro).

### Cellular Location

Membrane; Single-pass type I membrane protein. Cell membrane

### Tissue Location

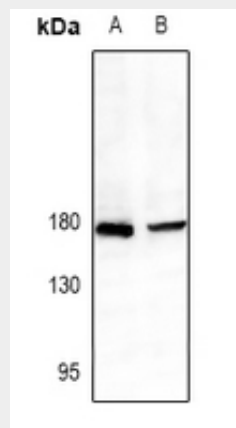
Widely expressed in adult and fetal tissues. In cervix epithelium expressed in undifferentiated subcolumnar reserve cells and squamous metaplasia. Expression is up-regulated in cervical squamous cell carcinoma. Expressed in bone marrow cell line HS-27a which supports the long-term maintenance of immature progenitor cells

### Anti-CD339 Antibody - Protocols

Provided below are standard protocols that you may find useful for product applications.

- [Western Blot](#)
- [Blocking Peptides](#)
- [Dot Blot](#)
- [Immunohistochemistry](#)
- [Immunofluorescence](#)
- [Immunoprecipitation](#)
- [Flow Cytometry](#)
- [Cell Culture](#)

### Anti-CD339 Antibody - Images



Western blot analysis of CD339 expression in C6 (A), CT26 (B) whole cell lysates.

### Anti-CD339 Antibody - Background

KLH-conjugated synthetic peptide encompassing a sequence within the center region of human CD339. The exact sequence is proprietary.