

Anti-CD49e Antibody
Rabbit polyclonal antibody to CD49e
Catalog # AP61483

Specification

Anti-CD49e Antibody - Product Information

Application	WB
Primary Accession	P08648
Other Accession	P11688
Reactivity	Human, Mouse
Host	Rabbit
Clonality	Polyclonal
Calculated MW	114536

Anti-CD49e Antibody - Additional Information

Gene ID 3678

Other Names

FNRA; Integrin alpha-5; CD49 antigen-like family member E; Fibronectin receptor subunit alpha; Integrin alpha-F; VLA-5; CD49e

Target/Specificity

Recognizes endogenous levels of CD49e protein.

Dilution

WB~~WB (1/500 - 1/1000)

Format

Liquid in 0.42% Potassium phosphate, 0.87% Sodium chloride, pH 7.3, 30% glycerol, and 0.09% (W/V) sodium azide.

Storage

Store at -20 °C. Stable for 12 months from date of receipt

Anti-CD49e Antibody - Protein Information

Name ITGA5 ([HGNC:6141](#))

Synonyms FNRA

Function

Integrin alpha-5/beta-1 (ITGA5:ITGB1) is a receptor for fibronectin and fibrinogen. It recognizes the sequence R-G-D in its ligands. ITGA5:ITGB1 binds to PLA2G2A via a site (site 2) which is distinct from the classical ligand-binding site (site 1) and this induces integrin conformational changes and enhanced ligand binding to site 1 (PubMed: [18635536](http://www.uniprot.org/citations/18635536), PubMed: [25398877](http://www.uniprot.org/citations/25398877)). ITGA5:ITGB1 acts as a receptor for fibrillin-1 (FBN1) and

mediates R-G-D-dependent cell adhesion to FBN1 (PubMed:12807887, PubMed:17158881). ITGA5:ITGB1 acts as a receptor for fibronectin (FN1) and mediates R-G-D-dependent cell adhesion to FN1 (PubMed:33962943). ITGA5:ITGB1 is a receptor for IL1B and binding is essential for IL1B signaling (PubMed:29030430). ITGA5:ITGB3 is a receptor for soluble CD40LG and is required for CD40/CD40LG signaling (PubMed:31331973).

Cellular Location

Cell membrane; Single-pass type I membrane protein. Cell junction, focal adhesion

Tissue Location

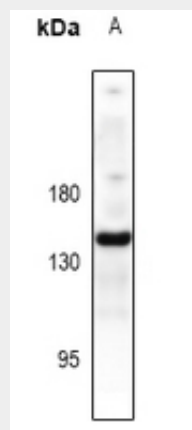
Expressed in placenta (at protein level).

Anti-CD49e Antibody - Protocols

Provided below are standard protocols that you may find useful for product applications.

- [Western Blot](#)
- [Blocking Peptides](#)
- [Dot Blot](#)
- [Immunohistochemistry](#)
- [Immunofluorescence](#)
- [Immunoprecipitation](#)
- [Flow Cytometry](#)
- [Cell Culture](#)

Anti-CD49e Antibody - Images



Western blot analysis of CD49e expression in Hela (A) whole cell lysates.

Anti-CD49e Antibody - Background

KLH-conjugated synthetic peptide encompassing a sequence within the center region of human CD49e. The exact sequence is proprietary.