

**Anti-MAGEA5 Antibody**  
Rabbit polyclonal antibody to MAGEA5  
Catalog # AP61480

### Specification

---

#### Anti-MAGEA5 Antibody - Product Information

Application	WB
Primary Accession	<a href="#">P43359</a>
Reactivity	Human, Mouse, Rat
Host	Rabbit
Clonality	Polyclonal
Calculated MW	13016

#### Anti-MAGEA5 Antibody - Additional Information

**Gene ID** 100533997

#### Other Names

MAGE5; Melanoma-associated antigen 5; Cancer/testis antigen 1.5; CT1.5; MAGE-5 antigen

#### Target/Specificity

Recognizes endogenous levels of MAGEA5 protein.

#### Dilution

WB~~WB (1/500 - 1/1000)

#### Format

Liquid in 0.42% Potassium phosphate, 0.87% Sodium chloride, pH 7.3, 30% glycerol, and 0.09% (W/V) sodium azide.

#### Storage

Store at -20 °C. Stable for 12 months from date of receipt

#### Anti-MAGEA5 Antibody - Protein Information

**Name** MAGEA5P ([HGNC:6803](#))

#### Function

May negatively regulates apoptosis.

#### Tissue Location

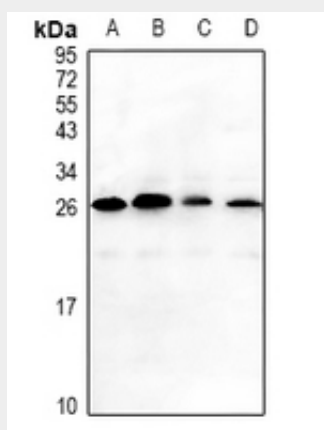
Expressed in many tumors of several types, such as melanoma, head and neck squamous cell carcinoma, lung carcinoma and breast carcinoma, but not in normal tissues except for testes

#### Anti-MAGEA5 Antibody - Protocols

Provided below are standard protocols that you may find useful for product applications.

- [Western Blot](#)
- [Blocking Peptides](#)
- [Dot Blot](#)
- [Immunohistochemistry](#)
- [Immunofluorescence](#)
- [Immunoprecipitation](#)
- [Flow Cytometry](#)
- [Cell Culture](#)

#### Anti-MAGEA5 Antibody - Images



Western blot analysis of MAGEA5 expression in mouse testis (A), rat testis (B), HeLa (C), A375 (D) whole cell lysates.

#### Anti-MAGEA5 Antibody - Background

KLH-conjugated synthetic peptide encompassing a sequence within the center region of human MAGEA5. The exact sequence is proprietary.