

**Anti-Complement C1S LC Antibody**  
**Rabbit polyclonal antibody to Complement C1S LC**  
**Catalog # AP61476****Specification**

---

**Anti-Complement C1S LC Antibody - Product Information**

Application	WB
Primary Accession	<a href="#">P09871</a>
Reactivity	Human, Rat
Host	Rabbit
Clonality	Polyclonal
Calculated MW	76684

**Anti-Complement C1S LC Antibody - Additional Information****Gene ID** 716**Other Names**

Complement C1s subcomponent; C1 esterase; Complement component 1 subcomponent s

**Target/Specificity**

Recognizes endogenous levels of Complement C1S LC protein.

**Dilution**

WB~~WB (1/500 - 1/1000)

**Format**

Liquid in 0.42% Potassium phosphate, 0.87% Sodium chloride, pH 7.3, 30% glycerol, and 0.09% (W/V) sodium azide.

**Storage**

Store at -20 °C.Stable for 12 months from date of receipt

**Anti-Complement C1S LC Antibody - Protein Information****Name** C1S**Function**

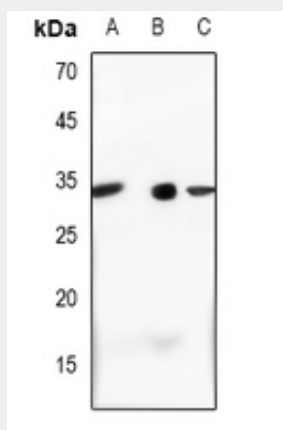
C1s B chain is a serine protease that combines with C1q and C1r to form C1, the first component of the classical pathway of the complement system. C1r activates C1s so that it can, in turn, activate C2 and C4. Cleaves also IGFBP5 and thereby inhibits the trophic effects of IGF1.

**Anti-Complement C1S LC Antibody - Protocols**

Provided below are standard protocols that you may find useful for product applications.

- [Western Blot](#)
- [Blocking Peptides](#)
- [Dot Blot](#)
- [Immunohistochemistry](#)
- [Immunofluorescence](#)
- [Immunoprecipitation](#)
- [Flow Cytometry](#)
- [Cell Culture](#)

#### Anti-Complement C1S LC Antibody - Images



Western blot analysis of Complement C1S LC expression in H1688 (A), A549 (B), rat liver (C) whole cell lysates.

#### Anti-Complement C1S LC Antibody - Background

KLH-conjugated synthetic peptide encompassing a sequence within the center region of human Complement C1S LC. The exact sequence is proprietary.