

Anti-Collagen 4 alpha 2 Antibody
Rabbit polyclonal antibody to Collagen 4 alpha 2
Catalog # AP61475

Specification

Anti-Collagen 4 alpha 2 Antibody - Product Information

Application	WB
Primary Accession	P08572
Other Accession	P08122
Reactivity	Human, Mouse
Host	Rabbit
Clonality	Polyclonal
Calculated MW	167553

Anti-Collagen 4 alpha 2 Antibody - Additional Information

Gene ID 1284

Other Names

Collagen alpha-2(IV) chain

Target/Specificity

Recognizes endogenous levels of Collagen 4 alpha 2 protein.

Dilution

WB~~WB (1/500 - 1/1000)

Format

Liquid in 0.42% Potassium phosphate, 0.87% Sodium chloride, pH 7.3, 30% glycerol, and 0.09% (W/V) sodium azide.

Storage

Store at -20 °C. Stable for 12 months from date of receipt

Anti-Collagen 4 alpha 2 Antibody - Protein Information

Name COL4A2 ([HGNC:2203](#))

Function

Type IV collagen is the major structural component of glomerular basement membranes (GBM), forming a 'chicken-wire' meshwork together with laminins, proteoglycans and entactin/nidogen.

Cellular Location

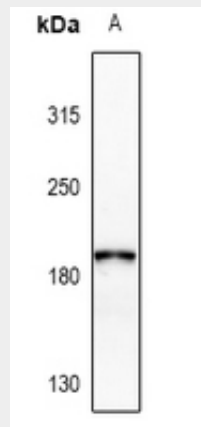
Secreted, extracellular space, extracellular matrix, basement membrane

Anti-Collagen 4 alpha 2 Antibody - Protocols

Provided below are standard protocols that you may find useful for product applications.

- [Western Blot](#)
- [Blocking Peptides](#)
- [Dot Blot](#)
- [Immunohistochemistry](#)
- [Immunofluorescence](#)
- [Immunoprecipitation](#)
- [Flow Cytometry](#)
- [Cell Culture](#)

Anti-Collagen 4 alpha 2 Antibody - Images



Western blot analysis of Collagen 4 alpha 2 expression in mouse pancreas (A) whole cell lysates.

Anti-Collagen 4 alpha 2 Antibody - Background

KLH-conjugated synthetic peptide encompassing a sequence within the C-term region of human Collagen 4 alpha 2. The exact sequence is proprietary.