

Anti-SHCC Antibody
Rabbit polyclonal antibody to SHCC
Catalog # AP61472

Specification

Anti-SHCC Antibody - Product Information

Application	WB
Primary Accession	O92529
Reactivity	Human
Host	Rabbit
Clonality	Polyclonal
Calculated MW	64056

Anti-SHCC Antibody - Additional Information

Gene ID 53358

Other Names

NSHC; SHCC; SHC-transforming protein 3; Neuronal Shc; N-Shc; Protein Raj; SHC-transforming protein C; Src homology 2 domain-containing-transforming protein C3; SH2 domain protein C3

Target/Specificity

Recognizes endogenous levels of SHCC protein.

Dilution

WB~~WB (1/500 - 1/1000), IH (1/50 - 1/200)

Format

Liquid in 0.42% Potassium phosphate, 0.87% Sodium chloride, pH 7.3, 30% glycerol, and 0.09% (W/V) sodium azide.

Storage

Store at -20 °C. Stable for 12 months from date of receipt

Anti-SHCC Antibody - Protein Information

Name SHC3

Synonyms NSHC, SHCC

Function

Signaling adapter that couples activated growth factor receptors to signaling pathway in neurons. Involved in the signal transduction pathways of neurotrophin-activated Trk receptors in cortical neurons.

Tissue Location

Mainly expressed in brain. Hardly detectable in other tissues, except in pancreas. Highly expressed in the cerebral cortex, frontal and temporal lobes, occipital pole, hippocampus, caudate

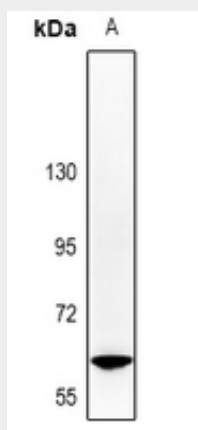
nucleus and amygdala. Expressed at low level in the cerebellum, medulla and spinal cord.

Anti-SHCC Antibody - Protocols

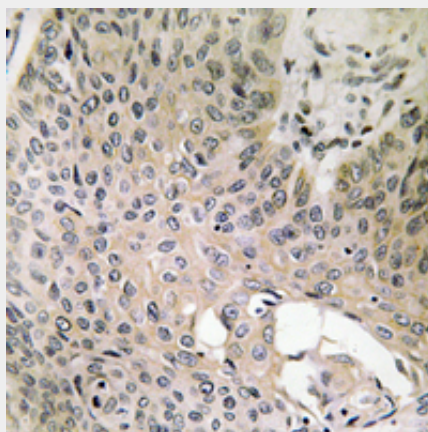
Provided below are standard protocols that you may find useful for product applications.

- [Western Blot](#)
- [Blocking Peptides](#)
- [Dot Blot](#)
- [Immunohistochemistry](#)
- [Immunofluorescence](#)
- [Immunoprecipitation](#)
- [Flow Cytometry](#)
- [Cell Culture](#)

Anti-SHCC Antibody - Images



Western blot analysis of SHCC expression in U87MG (A) whole cell lysates.



Immunohistochemical analysis of SHCC staining in human lung cancer formalin fixed paraffin embedded tissue section. The section was pre-treated using heat mediated antigen retrieval with sodium citrate buffer (pH 6.0). The section was then incubated with the antibody at room temperature and detected using an HRP conjugated compact polymer system. DAB was used as the chromogen. The section was then counterstained with haematoxylin and mounted with DPX.

Anti-SHCC Antibody - Background

KLH-conjugated synthetic peptide encompassing a sequence within the center region of human SHCC. The exact sequence is proprietary.