

**Anti-Topoisomerase 2 alpha (pS1213) Antibody**  
**Rabbit polyclonal antibody to Topoisomerase 2 alpha (pS1213)**  
**Catalog # AP61450**

### Specification

---

#### Anti-Topoisomerase 2 alpha (pS1213) Antibody - Product Information

Application	WB
Primary Accession	<a href="#">P11388</a>
Reactivity	Human
Host	Rabbit
Clonality	Polyclonal
Calculated MW	174385

#### Anti-Topoisomerase 2 alpha (pS1213) Antibody - Additional Information

**Gene ID** 7153

#### Other Names

TOP2; DNA topoisomerase 2-alpha; DNA topoisomerase II alpha isozyme

#### Target/Specificity

Recognizes endogenous levels of Topoisomerase 2 alpha with a site at pS1213 protein.

#### Dilution

WB~~WB (1/500 - 1/1000)

#### Format

Liquid in 0.42% Potassium phosphate, 0.87% Sodium chloride, pH 7.3, 30% glycerol, and 0.09% (W/V) sodium azide.

#### Storage

Store at -20 °C. Stable for 12 months from date of receipt

#### Anti-Topoisomerase 2 alpha (pS1213) Antibody - Protein Information

**Name** TOP2A

**Synonyms** TOP2

#### Function

Key decatenating enzyme that alters DNA topology by binding to two double-stranded DNA molecules, generating a double-stranded break in one of the strands, passing the intact strand through the broken strand, and religating the broken strand (PubMed: [17567603](http://www.uniprot.org/citations/17567603), PubMed: [18790802](http://www.uniprot.org/citations/18790802), PubMed: [22013166](http://www.uniprot.org/citations/22013166), PubMed: [22323612](http://www.uniprot.org/citations/22323612)). May play a role in regulating the period length of BMAL1 transcriptional oscillation (By similarity).

### Cellular Location

Cytoplasm. Nucleus, nucleoplasm. Nucleus. Nucleus, nucleolus

### Tissue Location

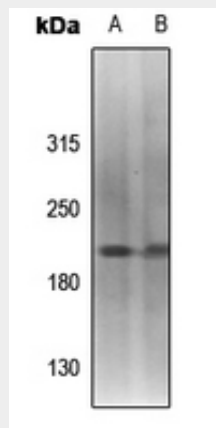
Expressed in the tonsil, spleen, lymph node, thymus, skin, pancreas, testis, colon, kidney, liver, brain and lung (PubMed:9155056). Also found in high-grade lymphomas, squamous cell lung tumors and seminomas (PubMed:9155056)

### Anti-Topoisomerase 2 alpha (pS1213) Antibody - Protocols

Provided below are standard protocols that you may find useful for product applications.

- [Western Blot](#)
- [Blocking Peptides](#)
- [Dot Blot](#)
- [Immunohistochemistry](#)
- [Immunofluorescence](#)
- [Immunoprecipitation](#)
- [Flow Cytometry](#)
- [Cell Culture](#)

### Anti-Topoisomerase 2 alpha (pS1213) Antibody - Images



Western blot analysis of Topoisomerase 2 alpha (pS1213) expression in SHSY5Y (A), Myla2059 (B) whole cell lysates.

### Anti-Topoisomerase 2 alpha (pS1213) Antibody - Background

KLH-conjugated synthetic peptide encompassing a sequence within the C-term region of human Topoisomerase 2 alpha with a site at pS1213. The exact sequence is proprietary.