

**Anti-Mimecan Antibody**  
Rabbit polyclonal antibody to Mimecan  
Catalog # AP61442

**Specification**

---

**Anti-Mimecan Antibody - Product Information**

Application	<b>WB</b>
Primary Accession	<a href="#">P20774</a>
Reactivity	<b>Human, Bovine</b>
Host	<b>Rabbit</b>
Clonality	<b>Polyclonal</b>
Calculated MW	<b>33922</b>

**Anti-Mimecan Antibody - Additional Information**

**Gene ID** 4969

**Other Names**

OIF; SLRR3A; Mimecan; Osteoglycin; Osteoinductive factor; OIF

**Target/Specificity**

Recognizes endogenous levels of Mimecan protein.

**Dilution**

WB~~WB (1/500 - 1/1000)

**Format**

Liquid in 0.42% Potassium phosphate, 0.87% Sodium chloride, pH 7.3, 30% glycerol, and 0.09% (W/V) sodium azide.

**Storage**

Store at -20 °C. Stable for 12 months from date of receipt

**Anti-Mimecan Antibody - Protein Information**

**Name** OGN

**Synonyms** OIF, SLRR3A

**Function**

Induces bone formation in conjunction with TGF-beta-1 or TGF- beta-2.

**Cellular Location**

Secreted, extracellular space, extracellular matrix {ECO:0000250|UniProtKB:Q8MJF1}

**Tissue Location**

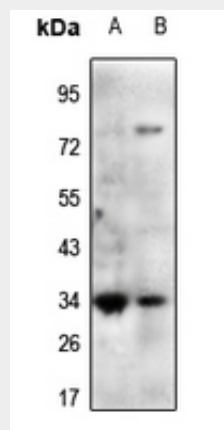
Bone.

## Anti-Mimecan Antibody - Protocols

Provided below are standard protocols that you may find useful for product applications.

- [Western Blot](#)
- [Blocking Peptides](#)
- [Dot Blot](#)
- [Immunohistochemistry](#)
- [Immunofluorescence](#)
- [Immunoprecipitation](#)
- [Flow Cytometry](#)
- [Cell Culture](#)

## Anti-Mimecan Antibody - Images



Western blot analysis of Mimecan expression in SKOV3 (A), PC3 (B) whole cell lysates.

## Anti-Mimecan Antibody - Background

KLH-conjugated synthetic peptide encompassing a sequence within the C-term region of human Mimecan. The exact sequence is proprietary.