

**Anti-Histone H3 (MonoMethyl-K18) Antibody**  
**Rabbit polyclonal antibody to Histone H3 (MonoMethyl-K18)**  
**Catalog # AP61434**

## Specification

---

### Anti-Histone H3 (MonoMethyl-K18) Antibody - Product Information

Application	WB
Primary Accession	<a href="#">P68431</a> , <a href="#">Q71DI3</a> , <a href="#">P84243</a> , <a href="#">Q6NXT2</a>
Reactivity	Human, Mouse, Rat, Zebrafish, Pig, Chicken, Bovine
Host	Rabbit
Clonality	Polyclonal

### Anti-Histone H3 (MonoMethyl-K18) Antibody - Additional Information

#### Other Names

HIST1H3A; H3FA; HIST1H3B; H3FL; HIST1H3C; H3FC; HIST1H3D; H3FB; HIST1H3E; H3FD; HIST1H3F; H3FI; HIST1H3G; H3FH; HIST1H3H; H3FK; HIST1H3I; H3FF; HIST1H3J; H3FJ; Histone H3.1; Histone H3/a; Histone H3/b; Histone H3/c; Histone H3/d; Histone H3/f; Histone H3/h; Histone H3/i; Histone H3/j; Histone H3/k; Histone H3/l; HIST2H3A; HIST2H3C; H3F2; H3FM; HIST2H3D; Histone H3.2; Histone H3/m; Histone H3/o; H3F3A; H3.3A; H3F3; PP781; H3F3B; H3.3B; Histone H3.3; H3F3C; Histone H3.3C; Histone H3.5

#### Target/Specificity

Recognizes endogenous levels of Histone H3 with a site at MonoMethyl-K18 protein.

#### Dilution

WB~~WB (1/500 - 1/1000)

#### Format

Liquid in 0.42% Potassium phosphate, 0.87% Sodium chloride, pH 7.3, 30% glycerol, and 0.09% (W/V) sodium azide.

#### Storage

Store at -20 °C. Stable for 12 months from date of receipt

### Anti-Histone H3 (MonoMethyl-K18) Antibody - Protein Information

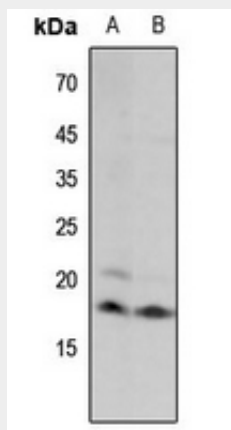
### Anti-Histone H3 (MonoMethyl-K18) Antibody - Protocols

Provided below are standard protocols that you may find useful for product applications.

- [Western Blot](#)
- [Blocking Peptides](#)
- [Dot Blot](#)
- [Immunohistochemistry](#)

- [Immunofluorescence](#)
- [Immunoprecipitation](#)
- [Flow Cytometry](#)
- [Cell Culture](#)

### Anti-Histone H3 (MonoMethyl-K18) Antibody - Images



Western blot analysis of Histone H3 (MonoMethyl-K18) expression in HEK293T (A), H446 (B) whole cell lysates.

### Anti-Histone H3 (MonoMethyl-K18) Antibody - Background

KLH-conjugated synthetic peptide encompassing a sequence within the N-term region of human Histone H3 with a site at MonoMethyl-K18. The exact sequence is proprietary.