

**Anti-IL-11RA Antibody**  
Rabbit polyclonal antibody to IL-11RA  
Catalog # AP61394

**Specification**

---

**Anti-IL-11RA Antibody - Product Information**

Application	WB
Primary Accession	<a href="#">Q14626</a>
Other Accession	<a href="#">Q64385</a>
Reactivity	Human, Mouse, Rat
Host	Rabbit
Clonality	Polyclonal
Calculated MW	45222

**Anti-IL-11RA Antibody - Additional Information**

Gene ID 3590

**Other Names**

Interleukin-11 receptor subunit alpha; IL-11 receptor subunit alpha; IL-11R subunit alpha; IL-11R-alpha; IL-11RA

**Target/Specificity**

Recognizes endogenous levels of IL-11RA protein.

**Dilution**

WB~~WB (1/500 - 1/1000)

**Format**

Liquid in 0.42% Potassium phosphate, 0.87% Sodium chloride, pH 7.3, 30% glycerol, and 0.09% (W/V) sodium azide.

**Storage**

Store at -20 °C. Stable for 12 months from date of receipt

**Anti-IL-11RA Antibody - Protein Information**

Name IL11RA ([HGNC:5967](#))

**Function**

Receptor for interleukin-11 (IL11). The receptor systems for IL6, LIF, OSM, CNTF, IL11 and CT1 can utilize IL6ST for initiating signal transmission. The IL11/IL11RA/IL6ST complex may be involved in the control of proliferation and/or differentiation of skeletogenic progenitor or other mesenchymal cells (Probable). Essential for the normal development of craniofacial bones and teeth. Restricts suture fusion and tooth number.

**Cellular Location**

[Interleukin-11 receptor subunit alpha]: Membrane; Single-pass type I membrane protein [Isoform

HCR2]: Secreted

#### Tissue Location

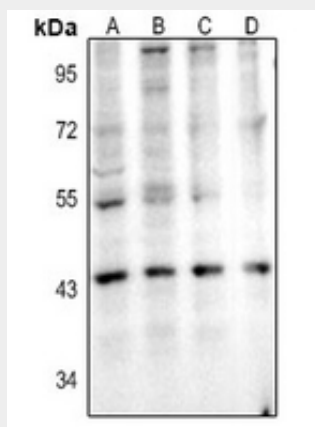
Expressed in a number of cell lines, including the myelogenous leukemia cell line K-562, the megakaryocytic leukemia cell line M-07e, the erythroleukemia cell line TF-1, and the osteosarcoma cell lines, MG-63 and SaOS-2 (PubMed:7670098). Also expressed in normal and malignant prostate epithelial cell lines. Expression levels are increased in prostate carcinoma.

#### Anti-IL-11RA Antibody - Protocols

Provided below are standard protocols that you may find useful for product applications.

- [Western Blot](#)
- [Blocking Peptides](#)
- [Dot Blot](#)
- [Immunohistochemistry](#)
- [Immunofluorescence](#)
- [Immunoprecipitation](#)
- [Flow Cytometry](#)
- [Cell Culture](#)

#### Anti-IL-11RA Antibody - Images



Western blot analysis of IL-11RA expression in HEK293T (A), MCF7 (B), 3T3L1 (C), H9C2 (D) whole cell lysates.

#### Anti-IL-11RA Antibody - Background

KLH-conjugated synthetic peptide encompassing a sequence within the C-term region of human IL-11RA. The exact sequence is proprietary.