

**Anti-CD142 Antibody**  
Rabbit polyclonal antibody to CD142  
Catalog # AP61382

### Specification

---

#### Anti-CD142 Antibody - Product Information

Application	WB
Primary Accession	<a href="#">P13726</a>
Reactivity	Human
Host	Rabbit
Clonality	Polyclonal
Calculated MW	33068

#### Anti-CD142 Antibody - Additional Information

**Gene ID** 2152

#### Other Names

Tissue factor; TF; Coagulation factor III; Thromboplastin; CD142

#### Target/Specificity

Recognizes endogenous levels of CD142 protein.

#### Dilution

WB~~WB (1/500 - 1/1000)

#### Format

Liquid in 0.42% Potassium phosphate, 0.87% Sodium chloride, pH 7.3, 30% glycerol, and 0.09% (W/V) sodium azide.

#### Storage

Store at -20 °C. Stable for 12 months from date of receipt

#### Anti-CD142 Antibody - Protein Information

**Name** F3

#### Function

Initiates blood coagulation by forming a complex with circulating factor VII or VIIa. The [TF:VIIa] complex activates factors IX or X by specific limited proteolysis. TF plays a role in normal hemostasis by initiating the cell-surface assembly and propagation of the coagulation protease cascade.

#### Cellular Location

[Isoform 1]: Membrane; Single-pass type I membrane protein

#### Tissue Location

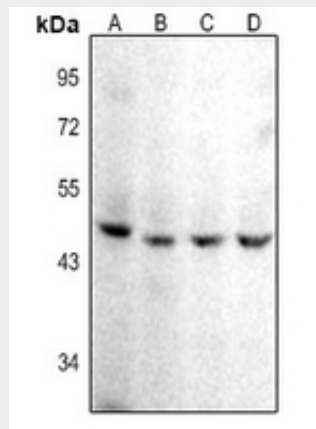
Lung, placenta and pancreas.

## Anti-CD142 Antibody - Protocols

Provided below are standard protocols that you may find useful for product applications.

- [Western Blot](#)
- [Blocking Peptides](#)
- [Dot Blot](#)
- [Immunohistochemistry](#)
- [Immunofluorescence](#)
- [Immunoprecipitation](#)
- [Flow Cytometry](#)
- [Cell Culture](#)

## Anti-CD142 Antibody - Images



Western blot analysis of CD142 expression in PC12 (A), A375 (B), SHSY5Y (C), 3T3L1 (D) whole cell lysates.

## Anti-CD142 Antibody - Background

KLH-conjugated synthetic peptide encompassing a sequence within the C-term region of human CD142. The exact sequence is proprietary.