

**Anti-SMAD7 (AcK70) Antibody**  
Rabbit polyclonal antibody to SMAD7 (AcK70)  
Catalog # AP61376

## Specification

---

### Anti-SMAD7 (AcK70) Antibody - Product Information

Application	WB
Primary Accession	<a href="#">O15105</a>
Other Accession	<a href="#">O35253</a>
Reactivity	Human, Mouse, Rat
Host	Rabbit
Clonality	Polyclonal
Calculated MW	46426

### Anti-SMAD7 (AcK70) Antibody - Additional Information

Gene ID 4092

#### Other Names

MADH7; MADH8; Mothers against decapentaplegic homolog 7; MAD homolog 7; Mothers against DPP homolog 7; Mothers against decapentaplegic homolog 8; MAD homolog 8; Mothers against DPP homolog 8; SMAD family member 7; SMAD 7; Smad7; hSMAD7

#### Target/Specificity

Recognizes endogenous levels of SMAD7 (AcK70) protein.

#### Dilution

WB~~WB (1/500 - 1/1000)

#### Format

Liquid in 0.42% Potassium phosphate, 0.87% Sodium chloride, pH 7.3, 30% glycerol, and 0.09% (W/V) sodium azide.

#### Storage

Store at -20 °C. Stable for 12 months from date of receipt

### Anti-SMAD7 (AcK70) Antibody - Protein Information

Name SMAD7

Synonyms MADH7, MADH8

#### Function

Antagonist of signaling by TGF-beta (transforming growth factor) type 1 receptor superfamily members; has been shown to inhibit TGF-beta (Transforming growth factor) and activin signaling by associating with their receptors thus preventing SMAD2 access (PubMed:<a href="http://www.uniprot.org/citations/21791611" target="\_blank">21791611</a>). Functions as an adapter to recruit SMURF2 to the TGF-beta receptor complex. Also acts by recruiting the

PPP1R15A-PP1 complex to TGFBR1, which promotes its dephosphorylation. Positively regulates PDPK1 kinase activity by stimulating its dissociation from the 14-3-3 protein YWHAQ which acts as a negative regulator.

#### Cellular Location

Nucleus. Cytoplasm. Note=Interaction with NEDD4L or RNF111 induces translocation from the nucleus to the cytoplasm (PubMed:16601693). TGF-beta stimulates its translocation from the nucleus to the cytoplasm. PDPK1 inhibits its translocation from the nucleus to the cytoplasm in response to TGF-beta (PubMed:17327236)

#### Tissue Location

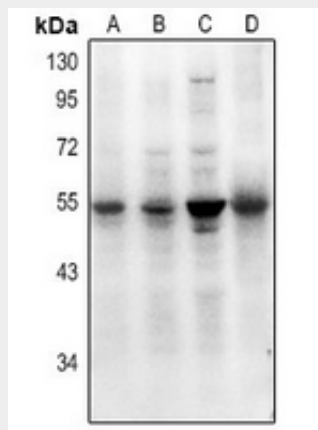
Ubiquitous with higher expression in the lung and vascular endothelium

### Anti-SMAD7 (AcK70) Antibody - Protocols

Provided below are standard protocols that you may find useful for product applications.

- [Western Blot](#)
- [Blocking Peptides](#)
- [Dot Blot](#)
- [Immunohistochemistry](#)
- [Immunofluorescence](#)
- [Immunoprecipitation](#)
- [Flow Cytometry](#)
- [Cell Culture](#)

### Anti-SMAD7 (AcK70) Antibody - Images



Western blot analysis of SMAD7 (AcK70) expression in LOVO (A), HEK293T (B), A549 (C), mouse lung (D) whole cell lysates.

### Anti-SMAD7 (AcK70) Antibody - Background

KLH-conjugated synthetic peptide encompassing a sequence within the center region of human SMAD7 (AcK70). The exact sequence is proprietary.