

**Anti-Flotillin 2 Antibody**  
Rabbit polyclonal antibody to Flotillin 2  
Catalog # AP61366**Specification**

---

**Anti-Flotillin 2 Antibody - Product Information**

Application	<b>WB</b>
Primary Accession	<a href="#">O14254</a>
Other Accession	<a href="#">O60634</a>
Reactivity	<b>Human, Mouse, Rat, Zebrafish</b>
Host	<b>Rabbit</b>
Clonality	<b>Polyclonal</b>
Calculated MW	<b>47064</b>

**Anti-Flotillin 2 Antibody - Additional Information****Gene ID** 2319**Other Names**

ESA1; M17S1; Flotillin-2; Epidermal surface antigen; ESA; Membrane component chromosome 17 surface marker 1

**Target/Specificity**

Recognizes endogenous levels of Flotillin 2 protein.

**Dilution**

WB~~WB (1/500 - 1/1000)

**Format**

Liquid in 0.42% Potassium phosphate, 0.87% Sodium chloride, pH 7.3, 30% glycerol, and 0.09% (W/V) sodium azide.

**Storage**

Store at -20 °C. Stable for 12 months from date of receipt

**Anti-Flotillin 2 Antibody - Protein Information****Name** FLOT2**Synonyms** ESA1, M17S1**Function**

May act as a scaffolding protein within caveolar membranes, functionally participating in formation of caveolae or caveolae-like vesicles. May be involved in epidermal cell adhesion and epidermal structure and function.

**Cellular Location**

Cell membrane; Peripheral membrane protein. Membrane, caveola; Peripheral membrane protein.

Endosome Membrane; Lipid-anchor. Note=Membrane-associated protein of caveolae

#### Tissue Location

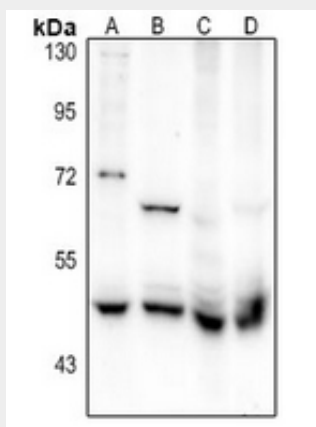
In skin, expressed in epidermis and epidermal appendages but not in dermis. Expressed in all layers of the epidermis except the basal layer. In hair follicles, expressed in the suprabasal layer but not the basal layer. Also expressed in melanoma and carcinoma cell lines, fibroblasts and foreskin melanocytes

#### Anti-Flotillin 2 Antibody - Protocols

Provided below are standard protocols that you may find useful for product applications.

- [Western Blot](#)
- [Blocking Peptides](#)
- [Dot Blot](#)
- [Immunohistochemistry](#)
- [Immunofluorescence](#)
- [Immunoprecipitation](#)
- [Flow Cytometry](#)
- [Cell Culture](#)

#### Anti-Flotillin 2 Antibody - Images



Western blot analysis of Flotillin 2 expression in A375 (A), SCC7 (B), mouse brain (C), C6 (D) whole cell lysates.

#### Anti-Flotillin 2 Antibody - Background

KLH-conjugated synthetic peptide encompassing a sequence within the center region of human Flotillin 2. The exact sequence is proprietary.