

Anti-TRHR Antibody
Rabbit polyclonal antibody to TRHR
Catalog # AP61359

Specification

Anti-TRHR Antibody - Product Information

Application	WB, IF
Primary Accession	P34981
Other Accession	P21761
Reactivity	Human, Mouse, Rat
Host	Rabbit
Clonality	Polyclonal
Calculated MW	45085

Anti-TRHR Antibody - Additional Information

Gene ID 7201

Other Names

Thyrotropin-releasing hormone receptor; TRH-R; Thyroliberin receptor

Target/Specificity

Recognizes endogenous levels of TRHR protein.

Dilution

WB~~WB (1/500 - 1/1000), IF/IC (1/100 - 1/500)

IF~~WB (1/500 - 1/1000), IF/IC (1/100 - 1/500)

Format

Liquid in 0.42% Potassium phosphate, 0.87% Sodium chloride, pH 7.3, 30% glycerol, and 0.09% (W/V) sodium azide.

Storage

Store at -20 °C. Stable for 12 months from date of receipt

Anti-TRHR Antibody - Protein Information

Name TRHR

Function

Receptor for thyrotropin-releasing hormone (TRH). Upon ligand binding, this G-protein-coupled receptor triggers activation of the phosphatidylinositol (IP3)-calcium-protein kinase C (PKC) pathway.

Cellular Location

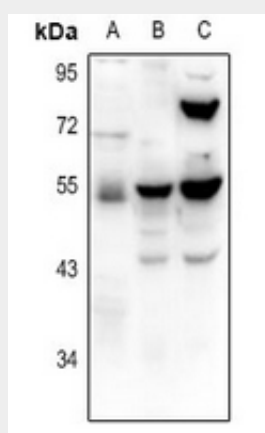
Cell membrane; Multi-pass membrane protein

Anti-TRHR Antibody - Protocols

Provided below are standard protocols that you may find useful for product applications.

- [Western Blot](#)
- [Blocking Peptides](#)
- [Dot Blot](#)
- [Immunohistochemistry](#)
- [Immunofluorescence](#)
- [Immunoprecipitation](#)
- [Flow Cytometry](#)
- [Cell Culture](#)

Anti-TRHR Antibody - Images



Western blot analysis of TRHR expression in U87MG (A), mouse brain (B), mouse kidney (C) whole cell lysates.



Immunofluorescent analysis of TRHR staining in A549 cells. Formalin-fixed cells were permeabilized with 0.1% Triton X-100 in TBS for 5-10 minutes and blocked with 3% BSA-PBS for 30 minutes at room temperature. Cells were probed with the primary antibody in 3% BSA-PBS and incubated overnight at 4 °C in a humidified chamber. Cells were washed with PBST and incubated with a Alexa Fluor 594-conjugated secondary antibody (red) in PBS at room temperature in the dark.

Anti-TRHR Antibody - Background

KLH-conjugated synthetic peptide encompassing a sequence within the center region of human

TRHR. The exact sequence is proprietary.