

Anti-ITIH4 Antibody
Rabbit polyclonal antibody to ITIH4
Catalog # AP61349

Specification

Anti-ITIH4 Antibody - Product Information

Application	WB
Primary Accession	Q14624
Reactivity	Human, Rat
Host	Rabbit
Clonality	Polyclonal
Calculated MW	103357

Anti-ITIH4 Antibody - Additional Information

Gene ID 3700

Other Names

IHRP; ITIHL1; PK120; Inter-alpha-trypsin inhibitor heavy chain H4; ITI heavy chain H4; ITI-HC4; Inter-alpha-inhibitor heavy chain 4; Inter-alpha-trypsin inhibitor family heavy chain-related protein; IHRP; Plasma kallikrein sensitive glycoprotein 120; Gp120; PK-120

Target/Specificity

Recognizes endogenous levels of ITIH4 protein.

Dilution

WB~~WB (1/500 - 1/1000)

Format

Liquid in 0.42% Potassium phosphate, 0.87% Sodium chloride, pH 7.3, 30% glycerol, and 0.09% (W/V) sodium azide.

Storage

Store at -20 °C. Stable for 12 months from date of receipt

Anti-ITIH4 Antibody - Protein Information

Name ITIH4

Synonyms IHRP, ITIHL1, PK120

Function

Type II acute-phase protein (APP) involved in inflammatory responses to trauma. May also play a role in liver development or regeneration.

Cellular Location

Secreted.

Tissue Location

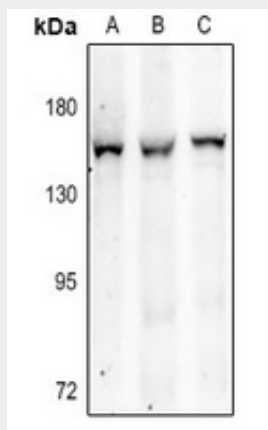
Liver specific.

Anti-ITIH4 Antibody - Protocols

Provided below are standard protocols that you may find useful for product applications.

- [Western Blot](#)
- [Blocking Peptides](#)
- [Dot Blot](#)
- [Immunohistochemistry](#)
- [Immunofluorescence](#)
- [Immunoprecipitation](#)
- [Flow Cytometry](#)
- [Cell Culture](#)

Anti-ITIH4 Antibody - Images



Western blot analysis of ITIH4 expression in rat liver (A), HepG2 (B), H1792 (C) whole cell lysates.

Anti-ITIH4 Antibody - Background

KLH-conjugated synthetic peptide encompassing a sequence within the center region of human ITIH4. The exact sequence is proprietary.