

**Anti-ME1 Antibody**  
Rabbit polyclonal antibody to ME1  
Catalog # AP61339

## Specification

---

### Anti-ME1 Antibody - Product Information

Application	WB
Primary Accession	<a href="#">P48163</a>
Reactivity	Human, Rat, Pig
Host	Rabbit
Clonality	Polyclonal
Calculated MW	64150

### Anti-ME1 Antibody - Additional Information

**Gene ID** 4199

#### Other Names

NADP-dependent malic enzyme; NADP-ME; Malic enzyme 1

#### Target/Specificity

Recognizes endogenous levels of ME1 protein.

#### Dilution

WB~~WB (1/500 - 1/1000)

#### Format

Liquid in 0.42% Potassium phosphate, 0.87% Sodium chloride, pH 7.3, 30% glycerol, and 0.09% (W/V) sodium azide.

#### Storage

Store at -20 °C. Stable for 12 months from date of receipt

### Anti-ME1 Antibody - Protein Information

**Name** ME1 ([HGNC:6983](#))

#### Function

Catalyzes the oxidative decarboxylation of (S)-malate in the presence of NADP(+) and divalent metal ions, and decarboxylation of oxaloacetate.

#### Cellular Location

Cytoplasm.

#### Tissue Location

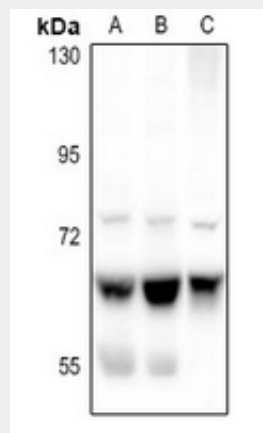
Expressed in all tissues tested including liver, placenta and white adipose tissue.

## Anti-ME1 Antibody - Protocols

Provided below are standard protocols that you may find useful for product applications.

- [Western Blot](#)
- [Blocking Peptides](#)
- [Dot Blot](#)
- [Immunohistochemistry](#)
- [Immunofluorescence](#)
- [Immunoprecipitation](#)
- [Flow Cytometry](#)
- [Cell Culture](#)

## Anti-ME1 Antibody - Images



Western blot analysis of ME1 expression in Panc1 (A), SGC7901 (B), rat skin (C) whole cell lysates.

## Anti-ME1 Antibody - Background

KLH-conjugated synthetic peptide encompassing a sequence within the C-term region of human ME1. The exact sequence is proprietary.