

Anti-PTGR1 Antibody
Rabbit polyclonal antibody to PTGR1
Catalog # AP61338**Specification**

Anti-PTGR1 Antibody - Product Information

Application	WB
Primary Accession	Q14914
Other Accession	Q91YR9
Reactivity	Human, Mouse
Host	Rabbit
Clonality	Polyclonal
Calculated MW	35870

Anti-PTGR1 Antibody - Additional Information**Gene ID** 22949**Other Names**

LTB4DH; Prostaglandin reductase 1; PRG-1; 15-oxoprostaglandin 13-reductase; NADP-dependent leukotriene B4 12-hydroxydehydrogenase

Target/Specificity

Recognizes endogenous levels of PTGR1 protein.

Dilution

WB~~WB (1/500 - 1/1000)

Format

Liquid in 0.42% Potassium phosphate, 0.87% Sodium chloride, pH 7.3, 30% glycerol, and 0.09% (W/V) sodium azide.

Storage

Store at -20 °C. Stable for 12 months from date of receipt

Anti-PTGR1 Antibody - Protein Information**Name** PTGR1**Synonyms** LTB4DH**Function**

NAD(P)H-dependent oxidoreductase involved in metabolic inactivation of pro- and anti-inflammatory eicosanoids: prostaglandins (PG), leukotrienes (LT) and lipoxins (LX) (PubMed:25619643). Catalyzes with high efficiency the reduction of the 13,14 double bond of 15- oxoPGs, including 15-oxo-PGE1, 15-oxo-PGE2, 15-oxo-PGF1-alpha and 15- oxo-PGF2-alpha (PubMed:25619643). Catalyzes

with lower efficiency the oxidation of the hydroxyl group at C12 of LTB4 and its derivatives, converting them into biologically less active 12-oxo-LTB4 metabolites (By similarity) (PubMed:25619643). Reduces 15-oxo-LXA4 to 13,14 dihydro-15-oxo-LXA4, enhancing neutrophil recruitment at the inflammatory site (By similarity). May play a role in metabolic detoxification of alkenals and ketones. Reduces alpha,beta-unsaturated alkenals and ketones, particularly those with medium-chain length, showing highest affinity toward (2E)-decenal and (3E)-3-nonen-2-one (PubMed:25619643). May inactivate 4-hydroxy-2-nonenal, a cytotoxic lipid constituent of oxidized low-density lipoprotein particles (By similarity).

Cellular Location

Cytoplasm {ECO:0000250|UniProtKB:Q29073}.

Tissue Location

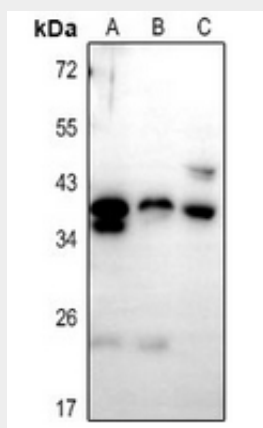
High expression in the kidney, liver, and intestine but not in leukocytes.

Anti-PTGR1 Antibody - Protocols

Provided below are standard protocols that you may find useful for product applications.

- [Western Blot](#)
- [Blocking Peptides](#)
- [Dot Blot](#)
- [Immunohistochemistry](#)
- [Immunofluorescence](#)
- [Immunoprecipitation](#)
- [Flow Cytometry](#)
- [Cell Culture](#)

Anti-PTGR1 Antibody - Images



Western blot analysis of PTGR1 expression in HEK293T (A), HepG2 (B), mouse kidney (C) whole cell lysates.

Anti-PTGR1 Antibody - Background

KLH-conjugated synthetic peptide encompassing a sequence within the center region of human PTGR1. The exact sequence is proprietary.