

Anti-CHSY3 Antibody
Rabbit polyclonal antibody to CHSY3
Catalog # AP61329

Specification

Anti-CHSY3 Antibody - Product Information

Application	WB
Primary Accession	O70JA7
Other Accession	O5DTK1
Reactivity	Human, Mouse, Rat
Host	Rabbit
Clonality	Polyclonal
Calculated MW	100284

Anti-CHSY3 Antibody - Additional Information

Gene ID 337876

Other Names

CHSY2; CSS3; Chondroitin sulfate synthase 3; Carbohydrate synthase 2; Chondroitin glucuronyltransferase 3; Chondroitin synthase 2; ChSy-2; Glucuronosyl-N-acetylgalactosaminyl-proteoglycan 4-beta-N-acetylgalactosaminyltransferase II; N-acetylgalactosaminyl-proteoglycan 3-beta-glucuronosyltransferase 3; N-acetylgalactosaminyltransferase 3

Target/Specificity

Recognizes endogenous levels of CHSY3 protein.

Dilution

WB~~WB (1/500 - 1/1000)

Format

Liquid in 0.42% Potassium phosphate, 0.87% Sodium chloride, pH 7.3, 30% glycerol, and 0.09% (W/V) sodium azide.

Storage

Store at -20 °C. Stable for 12 months from date of receipt

Anti-CHSY3 Antibody - Protein Information

Name CHSY3

Synonyms CHSY2, CSS3

Function

Has both beta-1,3-glucuronic acid and beta-1,4-N- acetylgalactosamine transferase activity. Transfers glucuronic acid (GlcUA) from UDP-GlcUA and N-acetylgalactosamine (GalNAc) from UDP-GalNAc to the non-reducing end of the elongating chondroitin polymer. Specific activity is much

reduced compared to CHSY1.

Cellular Location

Golgi apparatus, Golgi stack membrane; Single-pass type II membrane protein

Tissue Location

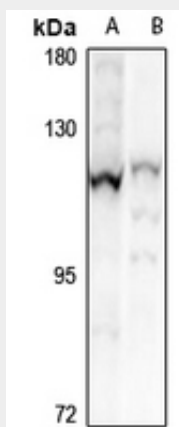
Detected at low levels in brain, cerebral cortex, uterus and small intestine.

Anti-CHSY3 Antibody - Protocols

Provided below are standard protocols that you may find useful for product applications.

- [Western Blot](#)
- [Blocking Peptides](#)
- [Dot Blot](#)
- [Immunohistochemistry](#)
- [Immunofluorescence](#)
- [Immunoprecipitation](#)
- [Flow Cytometry](#)
- [Cell Culture](#)

Anti-CHSY3 Antibody - Images



Western blot analysis of CHSY3 expression in Hela (A), mouse brain (B) whole cell lysates.

Anti-CHSY3 Antibody - Background

KLH-conjugated synthetic peptide encompassing a sequence within the N-term region of human CHSY3. The exact sequence is proprietary.