

Anti-Aquaporin 5 Antibody
Rabbit polyclonal antibody to Aquaporin 5
Catalog # AP61326**Specification**

Anti-Aquaporin 5 Antibody - Product Information

Application	WB
Primary Accession	P55064
Other Accession	Q9WTY4
Reactivity	Human, Mouse, Rat, Pig, Chicken
Host	Rabbit
Clonality	Polyclonal
Calculated MW	28292

Anti-Aquaporin 5 Antibody - Additional Information**Gene ID** 362**Other Names**

Aquaporin-5; AQP-5

Target/Specificity

Recognizes endogenous levels of Aquaporin 5 protein.

Dilution

WB~~WB (1/500 - 1/1000)

Format

Liquid in 0.42% Potassium phosphate, 0.87% Sodium chloride, pH 7.3, 30% glycerol, and 0.09% (W/V) sodium azide.

Storage

Store at -20 °C. Stable for 12 months from date of receipt

Anti-Aquaporin 5 Antibody - Protein Information**Name** AQP5 ([HGNC:638](#))**Function**

Aquaporins form homotetrameric transmembrane channels, with each monomer independently mediating water transport across the plasma membrane along its osmotic gradient (PubMed: [18768791](http://www.uniprot.org/citations/18768791), PubMed: [8621489](http://www.uniprot.org/citations/8621489)). Plays an important role in fluid secretion in salivary glands (By similarity). Required for TRPV4 activation by hypotonicity. Together with TRPV4, controls regulatory volume decrease in salivary epithelial cells (PubMed: [16571723](http://www.uniprot.org/citations/16571723)). Seems to play a redundant role in water transport in the eye, lung and in sweat glands (By similarity).

Cellular Location

Apical cell membrane; Multi-pass membrane protein. Cell membrane; Multi-pass membrane protein. Cytoplasmic vesicle membrane; Multi-pass membrane protein Note=Hypotonicity increases location at the cell membrane Phosphorylation decreases location at the cell membrane

Tissue Location

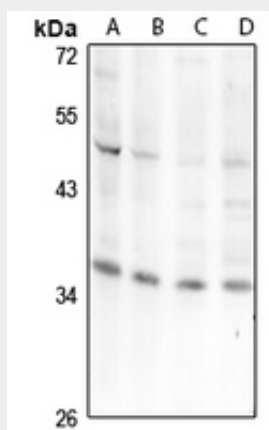
Detected in skin eccrine sweat glands, at the apical cell membrane and at intercellular canaliculi (at protein level).

Anti-Aquaporin 5 Antibody - Protocols

Provided below are standard protocols that you may find useful for product applications.

- [Western Blot](#)
- [Blocking Peptides](#)
- [Dot Blot](#)
- [Immunohistochemistry](#)
- [Immunofluorescence](#)
- [Immunoprecipitation](#)
- [Flow Cytometry](#)
- [Cell Culture](#)

Anti-Aquaporin 5 Antibody - Images



Western blot analysis of Aquaporin 5 expression in CT26 (A), C6 (B), U87MG (C), MCF7 (D) whole cell lysates.

Anti-Aquaporin 5 Antibody - Background

KLH-conjugated synthetic peptide encompassing a sequence within the C-term region of human Aquaporin 5. The exact sequence is proprietary.