

Anti-LMO4 Antibody
Rabbit polyclonal antibody to LMO4
Catalog # AP61307

Specification

Anti-LMO4 Antibody - Product Information

Application	WB, IF
Primary Accession	P61968
Other Accession	P61969
Reactivity	Human, Mouse, Rat, Zebrafish, Pig, Bovine
Host	Rabbit
Clonality	Polyclonal
Calculated MW	17994

Anti-LMO4 Antibody - Additional Information

Gene ID 8543

Other Names

LIM domain transcription factor LMO4; Breast tumor autoantigen; LIM domain only protein 4; LMO-4

Target/Specificity

Recognizes endogenous levels of LMO4 protein.

Dilution

WB~~WB (1/500 - 1/1000), IH (1/50 - 1/200), IF/IC (1/100 - 1/500)
IF~~WB (1/500 - 1/1000), IH (1/50 - 1/200), IF/IC (1/100 - 1/500)

Format

Liquid in 0.42% Potassium phosphate, 0.87% Sodium chloride, pH 7.3, 30% glycerol, and 0.09% (W/V) sodium azide.

Storage

Store at -20 °C. Stable for 12 months from date of receipt

Anti-LMO4 Antibody - Protein Information

Name LMO4

Function

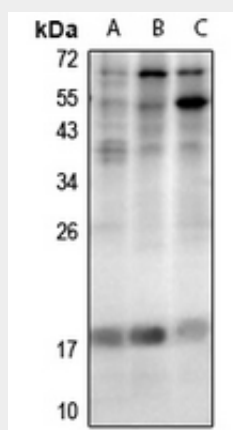
Transcription cofactor. Plays a role in establishing motor neuron identity, in concert with MNX1, acting, at least in part, to disrupt LDB1-LHX3 complexes thereby negatively modulating interneuron genes in motor neurons.

Anti-LMO4 Antibody - Protocols

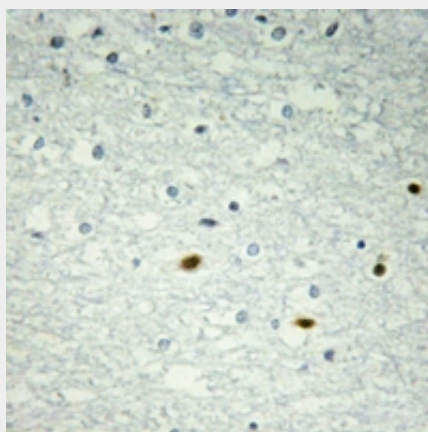
Provided below are standard protocols that you may find useful for product applications.

- [Western Blot](#)
- [Blocking Peptides](#)
- [Dot Blot](#)
- [Immunohistochemistry](#)
- [Immunofluorescence](#)
- [Immunoprecipitation](#)
- [Flow Cytometry](#)
- [Cell Culture](#)

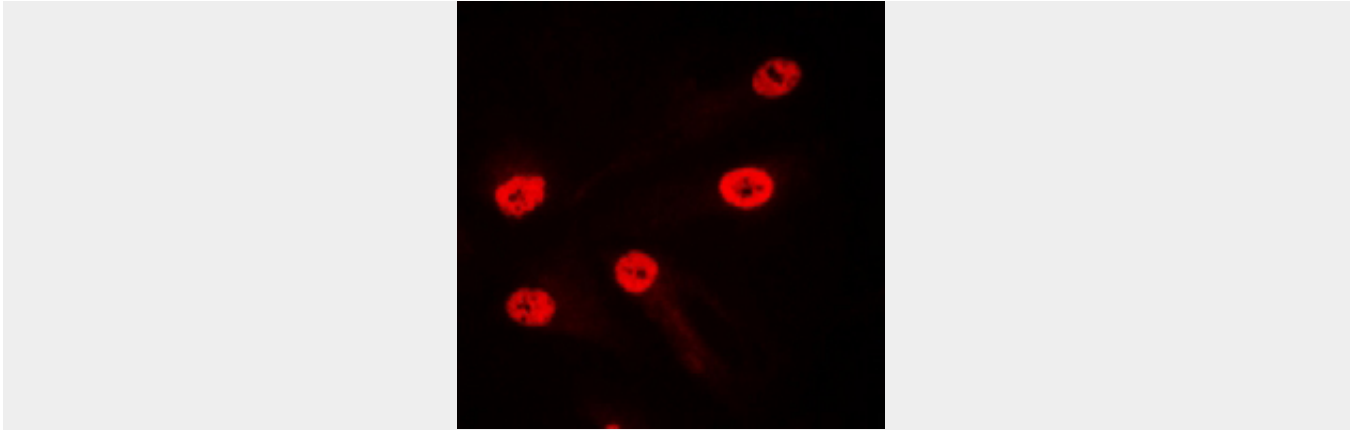
Anti-LMO4 Antibody - Images



Western blot analysis of LMO4 expression in A549 (A), HeLa (B), AML12 (C) whole cell lysates.



Immunohistochemical analysis of LMO4 staining in human brain formalin fixed paraffin embedded tissue section. The section was pre-treated using heat mediated antigen retrieval with sodium citrate buffer (pH 6.0). The section was then incubated with the antibody at room temperature and detected using an HRP conjugated compact polymer system. DAB was used as the chromogen. The section was then counterstained with haematoxylin and mounted with DPX.



Immunofluorescent analysis of LMO4 staining in NIH3T3 cells. Formalin-fixed cells were permeabilized with 0.1% Triton X-100 in TBS for 5-10 minutes and blocked with 3% BSA-PBS for 30 minutes at room temperature. Cells were probed with the primary antibody in 3% BSA-PBS and incubated overnight at 4 °C in a humidified chamber. Cells were washed with PBST and incubated with a Alexa Fluor 594-conjugated secondary antibody (red) in PBS at room temperature in the dark.

Anti-LMO4 Antibody - Background

KLH-conjugated synthetic peptide encompassing a sequence within the C-term region of human LMO4. The exact sequence is proprietary.