

**Anti-TOB (pS164) Antibody**  
Rabbit polyclonal antibody to TOB (pS164)  
Catalog # AP61276

### Specification

---

#### Anti-TOB (pS164) Antibody - Product Information

|                   |                        |
|-------------------|------------------------|
| Application       | WB                     |
| Primary Accession | <a href="#">P50616</a> |
| Other Accession   | <a href="#">Q61471</a> |
| Reactivity        | Human, Mouse, Rat      |
| Host              | Rabbit                 |
| Clonality         | Polyclonal             |
| Calculated MW     | 38155                  |

#### Anti-TOB (pS164) Antibody - Additional Information

**Gene ID** 10140

#### Other Names

TOB; TROB1; Protein Tob1; Transducer of erbB-2 1

#### Target/Specificity

Recognizes endogenous levels of TOB (pS164) protein.

#### Dilution

WB~~WB (1/500 - 1/1000), IH (1/50 - 1/200)

#### Format

Liquid in 0.42% Potassium phosphate, 0.87% Sodium chloride, pH 7.3, 30% glycerol, and 0.09% (W/V) sodium azide.

#### Storage

Store at -20 °C. Stable for 12 months from date of receipt

#### Anti-TOB (pS164) Antibody - Protein Information

**Name** TOB1

**Synonyms** TOB, TROB1

#### Function

Anti-proliferative protein; the function is mediated by association with deadenylase subunits of the CCR4-NOT complex (PubMed: [23236473](http://www.uniprot.org/citations/23236473) target="\_blank">23236473</a>, PubMed: [8632892](http://www.uniprot.org/citations/8632892) target="\_blank">8632892</a>). Mediates CPEB3-accelerated mRNA deadenylation by binding to CPEB3 and recruiting CNOT7 which leads to target mRNA deadenylation and decay (PubMed: [21336257](http://www.uniprot.org/citations/21336257) target="\_blank">21336257</a>).

### Cellular Location

Cytoplasm. Nucleus. Note=Only a small fraction localizes to the cytoplasm except in late S- phase where more than half of proteins become cytoplasmic

### Tissue Location

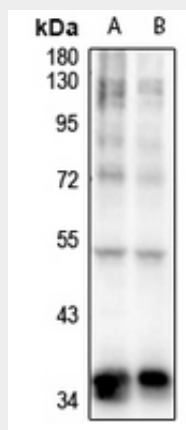
Ubiquitous.

### Anti-TOB (pS164) Antibody - Protocols

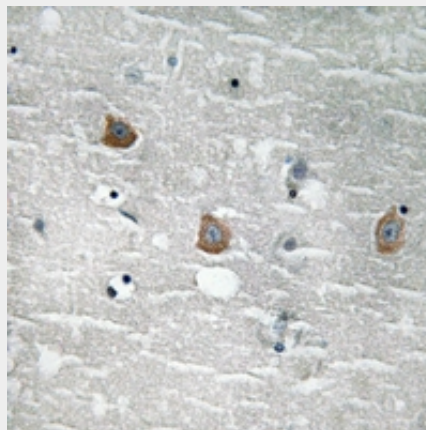
Provided below are standard protocols that you may find useful for product applications.

- [Western Blot](#)
- [Blocking Peptides](#)
- [Dot Blot](#)
- [Immunohistochemistry](#)
- [Immunofluorescence](#)
- [Immunoprecipitation](#)
- [Flow Cytometry](#)
- [Cell Culture](#)

### Anti-TOB (pS164) Antibody - Images



Western blot analysis of TOB (pS164) expression in HEK293T (A), H1792 (B) whole cell lysates.



Immunohistochemical analysis of TOB (pS164) staining in human brain formalin fixed paraffin embedded tissue section. The section was pre-treated using heat mediated antigen retrieval with

sodium citrate buffer (pH 6.0). The section was then incubated with the antibody at room temperature and detected using an HRP conjugated compact polymer system. DAB was used as the chromogen. The section was then counterstained with haematoxylin and mounted with DPX.

#### **Anti-TOB (pS164) Antibody - Background**

KLH-conjugated synthetic peptide encompassing a sequence within the center region of human TOB (pS164). The exact sequence is proprietary.