

Anti-p23 (pS113) Antibody
Rabbit polyclonal antibody to p23 (pS113)
Catalog # AP61250

Specification

Anti-p23 (pS113) Antibody - Product Information

Application	WB
Primary Accession	O15185
Other Accession	O9R0Q7
Reactivity	Human, Mouse, Rat, Monkey, Chicken, Bovine
Host	Rabbit
Clonality	Polyclonal
Calculated MW	18697

Anti-p23 (pS113) Antibody - Additional Information

Gene ID 10728

Other Names

P23; TEBP; Prostaglandin E synthase 3; Cytosolic prostaglandin E2 synthase; cPGES; Hsp90 co-chaperone; Progesterone receptor complex p23; Telomerase-binding protein p23

Target/Specificity

Recognizes endogenous levels of p23 (pS113) protein.

Dilution

WB~~WB (1/500 - 1/1000), IH (1/50 - 1/200)

Format

Liquid in 0.42% Potassium phosphate, 0.87% Sodium chloride, pH 7.3, 30% glycerol, and 0.09% (W/V) sodium azide.

Storage

Store at -20 °C. Stable for 12 months from date of receipt

Anti-p23 (pS113) Antibody - Protein Information

Name PTGES3

Synonyms P23, TEBP

Function

Cytosolic prostaglandin synthase that catalyzes the oxidoreduction of prostaglandin endoperoxide H2 (PGH2) to prostaglandin E2 (PGE2) (PubMed: 10922363). Molecular chaperone that localizes to genomic response elements in a hormone-dependent manner and disrupts receptor-mediated transcriptional activation, by promoting disassembly of transcriptional

regulatory complexes (PubMed:11274138, PubMed:12077419). Facilitates HIF alpha proteins hydroxylation via interaction with EGLN1/PHD2, leading to recruit EGLN1/PHD2 to the HSP90 pathway (PubMed:24711448).

Cellular Location

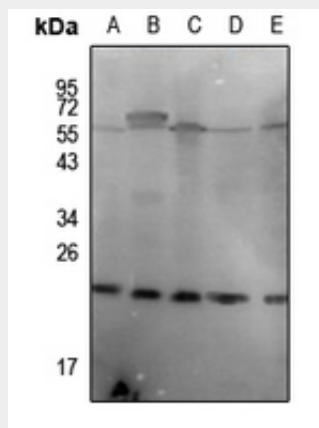
Cytoplasm {ECO:0000250|UniProtKB:Q3ZBF7}.

Anti-p23 (pS113) Antibody - Protocols

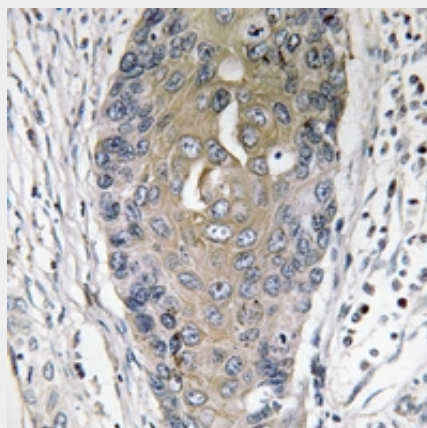
Provided below are standard protocols that you may find useful for product applications.

- [Western Blot](#)
- [Blocking Peptides](#)
- [Dot Blot](#)
- [Immunohistochemistry](#)
- [Immunofluorescence](#)
- [Immunoprecipitation](#)
- [Flow Cytometry](#)
- [Cell Culture](#)

Anti-p23 (pS113) Antibody - Images



Western blot analysis of p23 (pS113) expression in C6 (A), rat testis (B), Myla2059 (C), U87MG (D), SKOV3 (E) whole cell lysates.



Immunohistochemical analysis of p23 (pS113) staining in human lung cancer formalin fixed paraffin embedded tissue section. The section was pre-treated using heat mediated antigen retrieval with sodium citrate buffer (pH 6.0). The section was then incubated with the antibody at room temperature and detected using an HRP conjugated compact polymer system. DAB was used as the chromogen. The section was then counterstained with haematoxylin and mounted with DPX.

Anti-p23 (pS113) Antibody - Background

KLH-conjugated synthetic peptide encompassing a sequence within the center region of human p23 (pS113). The exact sequence is proprietary.