

**Anti-CD132 Antibody**  
**Rabbit polyclonal antibody to CD132**  
**Catalog # AP61242****Specification**

---

**Anti-CD132 Antibody - Product Information**

Application	<b>WB</b>
Primary Accession	<a href="#">P31785</a>
Other Accession	<a href="#">P34902</a>
Reactivity	<b>Human, Mouse, Rat, Pig</b>
Host	<b>Rabbit</b>
Clonality	<b>Polyclonal</b>
Calculated MW	<b>42287</b>

**Anti-CD132 Antibody - Additional Information****Gene ID** 3561**Other Names**

Cytokine receptor common subunit gamma; Interleukin-2 receptor subunit gamma; IL-2 receptor subunit gamma; IL-2R subunit gamma; IL-2RG; gammaC; p64; CD132

**Target/Specificity**

Recognizes endogenous levels of CD132 protein.

**Dilution**

WB~~WB (1/500 - 1/1000)

**Format**

Liquid in 0.42% Potassium phosphate, 0.87% Sodium chloride, pH 7.3, 30% glycerol, and 0.09% (W/V) sodium azide.

**Storage**

Store at -20 °C. Stable for 12 months from date of receipt

**Anti-CD132 Antibody - Protein Information****Name** IL2RG**Function**

Common subunit for the receptors for a variety of interleukins. Probably in association with IL15RA, involved in the stimulation of neutrophil phagocytosis by IL15 (PubMed:&lt;a href="http://www.uniprot.org/citations/15123770" target="\_blank"&gt;15123770&lt;/a&gt;).

**Cellular Location**

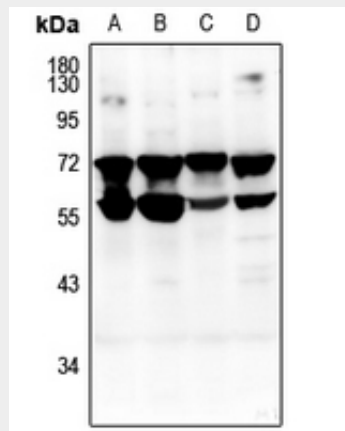
Cell membrane; Single-pass type I membrane protein. Cell surface

## Anti-CD132 Antibody - Protocols

Provided below are standard protocols that you may find useful for product applications.

- [Western Blot](#)
- [Blocking Peptides](#)
- [Dot Blot](#)
- [Immunohistochemistry](#)
- [Immunofluorescence](#)
- [Immunoprecipitation](#)
- [Flow Cytometry](#)
- [Cell Culture](#)

## Anti-CD132 Antibody - Images



Western blot analysis of CD132 expression in Myla2059 (A), HCT116 (B), mouse lung (C), rat spleen (D) whole cell lysates.

## Anti-CD132 Antibody - Background

KLH-conjugated synthetic peptide encompassing a sequence within the center region of human CD132. The exact sequence is proprietary.