

Anti-PAI1 Antibody
Rabbit polyclonal antibody to PAI1
Catalog # AP61239

Specification

Anti-PAI1 Antibody - Product Information

Application	WB
Primary Accession	P05121
Other Accession	P22777
Reactivity	Human, Mouse, Rat
Host	Rabbit
Clonality	Polyclonal
Calculated MW	45060

Anti-PAI1 Antibody - Additional Information

Gene ID 5054

Other Names

PAI1; PLANH1; Plasminogen activator inhibitor 1; PAI; PAI-1; Endothelial plasminogen activator inhibitor; Serpin E1

Target/Specificity

Recognizes endogenous levels of PAI1 protein.

Dilution

WB~~WB (1/500 - 1/1000), IH (1/50 - 1/200)

Format

Liquid in 0.42% Potassium phosphate, 0.87% Sodium chloride, pH 7.3, 30% glycerol, and 0.09% (W/V) sodium azide.

Storage

Store at -20 °C. Stable for 12 months from date of receipt

Anti-PAI1 Antibody - Protein Information

Name SERPINE1

Synonyms PAI1, PLANH1

Function

Serine protease inhibitor. Inhibits TMPRSS7 (PubMed:15853774). Is a primary inhibitor of tissue-type plasminogen activator (PLAT) and urokinase-type plasminogen activator (PLAU). As PLAT inhibitor, it is required for fibrinolysis down-regulation and is responsible for the controlled degradation of blood clots (PubMed:17912461, PubMed:<a

[8481516](http://www.uniprot.org/citations/8481516), PubMed:[9207454](http://www.uniprot.org/citations/9207454)). As PLAU inhibitor, it is involved in the regulation of cell adhesion and spreading (PubMed:[9175705](http://www.uniprot.org/citations/9175705)). Acts as a regulator of cell migration, independently of its role as protease inhibitor (PubMed:[15001579](http://www.uniprot.org/citations/15001579), PubMed:[9168821](http://www.uniprot.org/citations/9168821)). It is required for stimulation of keratinocyte migration during cutaneous injury repair (PubMed:[18386027](http://www.uniprot.org/citations/18386027)). It is involved in cellular and replicative senescence (PubMed:[16862142](http://www.uniprot.org/citations/16862142)). Plays a role in alveolar type 2 cells senescence in the lung (By similarity). Is involved in the regulation of cementogenic differentiation of periodontal ligament stem cells, and regulates odontoblast differentiation and dentin formation during odontogenesis (PubMed:[25808697](http://www.uniprot.org/citations/25808697), PubMed:[27046084](http://www.uniprot.org/citations/27046084)).

Cellular Location

Secreted.

Tissue Location

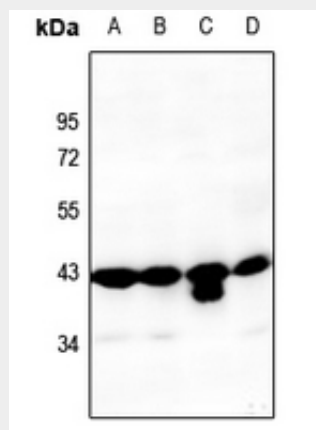
Expressed in endothelial cells (PubMed:2430793, PubMed:3097076). Found in plasma, platelets, and hepatoma and fibrosarcoma cells.

Anti-PAI1 Antibody - Protocols

Provided below are standard protocols that you may find useful for product applications.

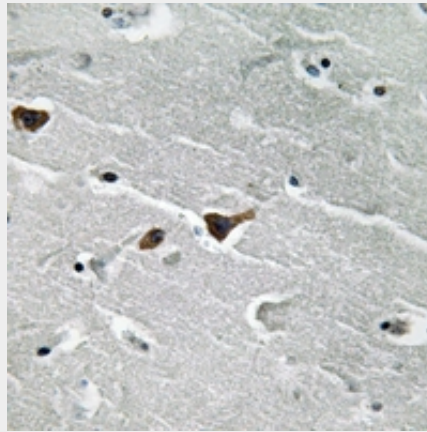
- [Western Blot](#)
- [Blocking Peptides](#)
- [Dot Blot](#)
- [Immunohistochemistry](#)
- [Immunofluorescence](#)
- [Immunoprecipitation](#)
- [Flow Cytometry](#)
- [Cell Culture](#)

Anti-PAI1 Antibody - Images



Western blot analysis of PAI1 expression in DLD (A), HepG2 (B), PMVEC (C), AML12 (D) whole cell

lysates.



Immunohistochemical analysis of PAI1 staining in human brain formalin fixed paraffin embedded tissue section. The section was pre-treated using heat mediated antigen retrieval with sodium citrate buffer (pH 6.0). The section was then incubated with the antibody at room temperature and detected using an HRP conjugated compact polymer system. DAB was used as the chromogen. The section was then counterstained with haematoxylin and mounted with DPX.

Anti-PAI1 Antibody - Background

KLH-conjugated synthetic peptide encompassing a sequence within the center region of human PAI1. The exact sequence is proprietary.