

Anti-Occludin Antibody
Rabbit polyclonal antibody to Occludin
Catalog # AP61238

Specification

Anti-Occludin Antibody - Product Information

Application	WB
Primary Accession	O16625
Other Accession	O61146
Reactivity	Human, Mouse, Rat, Dog
Host	Rabbit
Clonality	Polyclonal
Calculated MW	59144

Anti-Occludin Antibody - Additional Information

Gene ID 100506658

Other Names
Occludin

Target/Specificity
Recognizes endogenous levels of Occludin protein.

Dilution
WB~~WB (1/500 - 1/1000)

Format
Liquid in 0.42% Potassium phosphate, 0.87% Sodium chloride, pH 7.3, 30% glycerol, and 0.09% (W/V) sodium azide.

Storage
Store at -20 °C. Stable for 12 months from date of receipt

Anti-Occludin Antibody - Protein Information

Name OCLN

Function
May play a role in the formation and regulation of the tight junction (TJ) paracellular permeability barrier. It is able to induce adhesion when expressed in cells lacking tight junctions.

Cellular Location
Cell membrane; Multi-pass membrane protein. Cell junction, tight junction

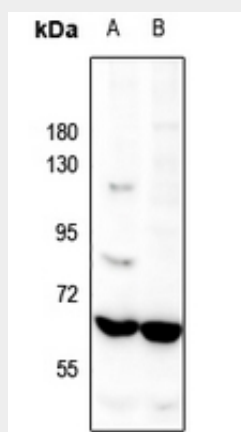
Tissue Location
Localized at tight junctions of both epithelial and endothelial cells. Highly expressed in kidney. Not detected in testis

Anti-Occludin Antibody - Protocols

Provided below are standard protocols that you may find useful for product applications.

- [Western Blot](#)
- [Blocking Peptides](#)
- [Dot Blot](#)
- [Immunohistochemistry](#)
- [Immunofluorescence](#)
- [Immunoprecipitation](#)
- [Flow Cytometry](#)
- [Cell Culture](#)

Anti-Occludin Antibody - Images



Western blot analysis of Occludin expression in mouse kidney (A), rat kidney (B) whole cell lysates.

Anti-Occludin Antibody - Background

KLH-conjugated synthetic peptide encompassing a sequence within the C-term region of human Occludin. The exact sequence is proprietary.