

Anti-NEFH Antibody
Rabbit polyclonal antibody to NEFH
Catalog # AP61237

Specification

Anti-NEFH Antibody - Product Information

Application	WB, IF
Primary Accession	P12036
Other Accession	P19246
Reactivity	Human, Mouse, Rat
Host	Rabbit
Clonality	Polyclonal
Calculated MW	111838

Anti-NEFH Antibody - Additional Information

Gene ID 4744

Other Names

KIAA0845; NFH; Neurofilament heavy polypeptide; NF-H; 200 kDa neurofilament protein; Neurofilament triplet H protein

Target/Specificity

Recognizes endogenous levels of NEFH protein.

Dilution

WB~~WB (1/500 - 1/1000), IH (1/50 - 1/200), IC (1/100 - 1/500)
IF~~WB (1/500 - 1/1000), IH (1/50 - 1/200), IC (1/100 - 1/500)

Format

Liquid in 0.42% Potassium phosphate, 0.87% Sodium chloride, pH 7.3, 30% glycerol, and 0.09% (W/V) sodium azide.

Storage

Store at -20 °C. Stable for 12 months from date of receipt

Anti-NEFH Antibody - Protein Information

Name NEFH

Synonyms KIAA0845, NFH

Function

Neurofilaments usually contain three intermediate filament proteins: NEFL, NEFM, and NEFH which are involved in the maintenance of neuronal caliber. NEFH has an important function in mature axons that is not subserved by the two smaller NF proteins. May additionally cooperate with the neuronal intermediate filament proteins PRPH and INA to form neuronal filamentous networks (By similarity).

Cellular Location

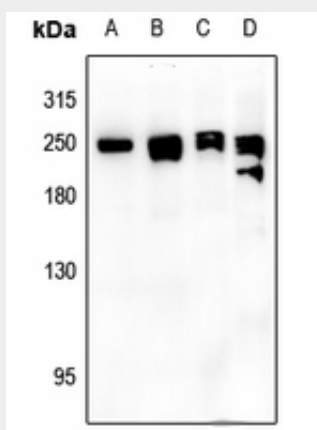
Cytoplasm, cytoskeleton. Cell projection, axon {ECO:0000250|UniProtKB:P19246}

Anti-NEFH Antibody - Protocols

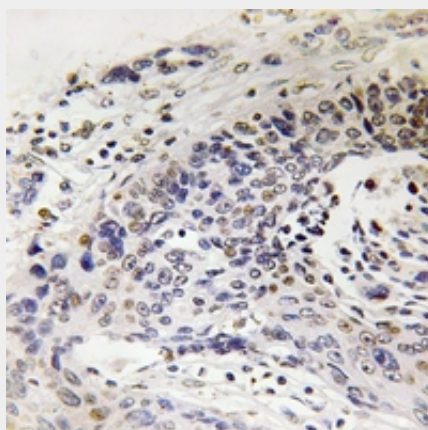
Provided below are standard protocols that you may find useful for product applications.

- [Western Blot](#)
- [Blocking Peptides](#)
- [Dot Blot](#)
- [Immunohistochemistry](#)
- [Immunofluorescence](#)
- [Immunoprecipitation](#)
- [Flow Cytometry](#)
- [Cell Culture](#)

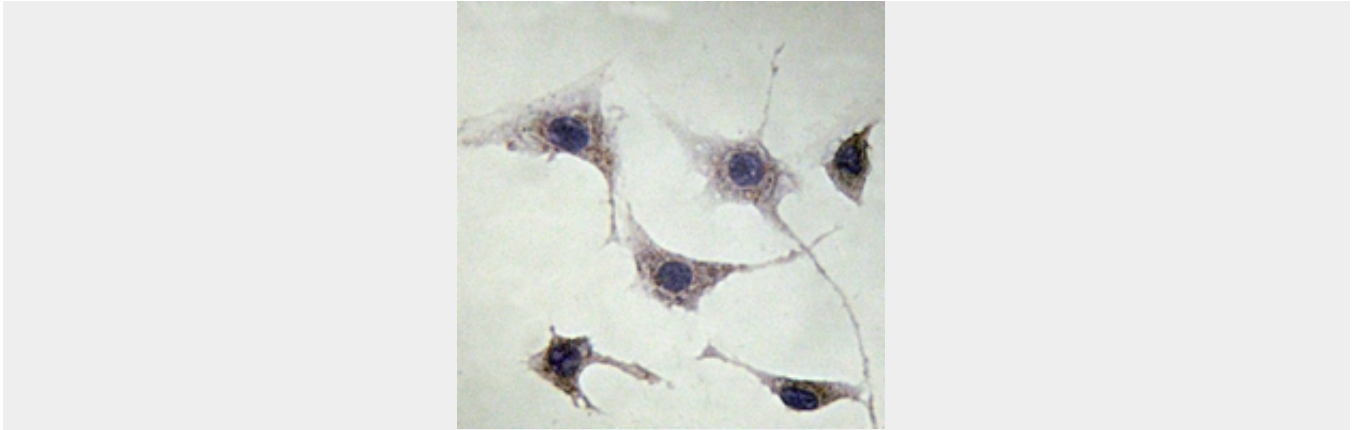
Anti-NEFH Antibody - Images



Western blot analysis of NEFH expression in C6 (A), CT26 (B), HepG2 (C), A2780 (D) whole cell lysates.



Immunohistochemical analysis of NEFH staining in human lung cancer formalin fixed paraffin embedded tissue section. The section was pre-treated using heat mediated antigen retrieval with sodium citrate buffer (pH 6.0). The section was then incubated with the antibody at room temperature and detected using an HRP conjugated compact polymer system. DAB was used as the chromogen. The section was then counterstained with haematoxylin and mounted with DPX.



Immunocytochemistry analysis of NEFH staining in NIH3T3 cells. Formalin-fixed cells were permeabilized with 0.1% Triton X-100 in TBS for 5-10 minutes and blocked with 3% BSA-PBS for 30 minutes at room temperature. Cells were probed with the primary antibody in 3% BSA-PBS and incubated overnight at 4 °C in a humidified chamber. Cells were washed with PBST and incubated with a HRP-conjugated secondary antibody in PBS at room temperature. DAB was used as the chromogen.

Anti-NEFH Antibody - Background

KLH-conjugated synthetic peptide encompassing a sequence within the C-term region of human NEFH. The exact sequence is proprietary.