

**Anti-CHRM2 Antibody**  
Rabbit polyclonal antibody to CHRM2  
Catalog # AP61231**Specification**

---

**Anti-CHRM2 Antibody - Product Information**

Application	WB, IF
Primary Accession	<a href="#">P08172</a>
Other Accession	<a href="#">Q9ERZ4</a>
Reactivity	Human, Mouse, Rat, Pig, Bovine
Host	Rabbit
Clonality	Polyclonal
Calculated MW	51715

**Anti-CHRM2 Antibody - Additional Information****Gene ID** 1129**Other Names**

Muscarinic acetylcholine receptor M2

**Target/Specificity**

Recognizes endogenous levels of CHRM2 protein.

**Dilution**

WB~~WB (1/500 - 1/1000), IF/IC (1/100 - 1/500)

IF~~WB (1/500 - 1/1000), IF/IC (1/100 - 1/500)

**Format**

Liquid in 0.42% Potassium phosphate, 0.87% Sodium chloride, pH 7.3, 30% glycerol, and 0.09% (W/V) sodium azide.

**Storage**

Store at -20 °C. Stable for 12 months from date of receipt

**Anti-CHRM2 Antibody - Protein Information****Name** CHRM2**Function**

The muscarinic acetylcholine receptor mediates various cellular responses, including inhibition of adenylate cyclase, breakdown of phosphoinositides and modulation of potassium channels through the action of G proteins. Primary transducing effect is adenylate cyclase inhibition. Signaling promotes phospholipase C activity, leading to the release of inositol trisphosphate (IP3); this then triggers calcium ion release into the cytosol.

**Cellular Location**

Cell membrane; Multi-pass membrane protein. Postsynaptic cell membrane; Multi-pass membrane

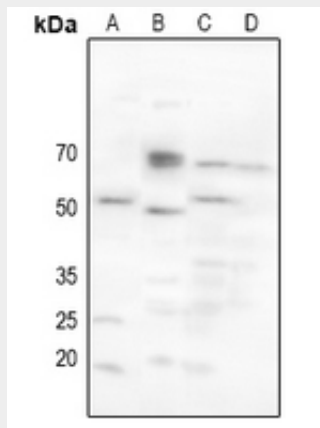
protein. Note=Phosphorylation in response to agonist binding promotes receptor internalization {ECO:0000250|UniProtKB:P06199}

### Anti-CHRM2 Antibody - Protocols

Provided below are standard protocols that you may find useful for product applications.

- [Western Blot](#)
- [Blocking Peptides](#)
- [Dot Blot](#)
- [Immunohistochemistry](#)
- [Immunofluorescence](#)
- [Immunoprecipitation](#)
- [Flow Cytometry](#)
- [Cell Culture](#)

### Anti-CHRM2 Antibody - Images



Western blot analysis of CHRM2 expression in HEK293T (A), mouse lung (B), mouse kidney (C), rat kidney (D) whole cell lysates.



Immunofluorescent analysis of CHRM2 staining in LOVO cells. Formalin-fixed cells were permeabilized with 0.1% Triton X-100 in TBS for 5-10 minutes and blocked with 3% BSA-PBS for 30 minutes at room temperature. Cells were probed with the primary antibody in 3% BSA-PBS and incubated overnight at 4 °C in a humidified chamber. Cells were washed with PBST and incubated with a Alexa Fluor 594-conjugated secondary antibody (red) in PBS at room temperature in the

dark.

### **Anti-CHRM2 Antibody - Background**

KLH-conjugated synthetic peptide encompassing a sequence within the center region of human CHRM2. The exact sequence is proprietary.