

**Anti-SSH3 Antibody**  
**Rabbit polyclonal antibody to SSH3**  
**Catalog # AP61221****Specification**

---

**Anti-SSH3 Antibody - Product Information**

Application	WB
Primary Accession	<a href="#">Q8TE77</a>
Other Accession	<a href="#">Q8K330</a>
Reactivity	Human, Mouse, Rat
Host	Rabbit
Clonality	Polyclonal
Calculated MW	72996

**Anti-SSH3 Antibody - Additional Information****Gene ID** 54961**Other Names**

SSH3L; Protein phosphatase Slingshot homolog 3; SSH-like protein 3; SSH-3L; hSSH-3L

**Target/Specificity**

Recognizes endogenous levels of SSH3 protein.

**Dilution**

WB~~WB (1/500 - 1/1000), IH (1/50 - 1/200)

**Format**

Liquid in 0.42% Potassium phosphate, 0.87% Sodium chloride, pH 7.3, 30% glycerol, and 0.09% (W/V) sodium azide.

**Storage**

Store at -20 °C. Stable for 12 months from date of receipt

**Anti-SSH3 Antibody - Protein Information****Name** SSH3**Synonyms** SSH3L**Function**

Protein phosphatase which may play a role in the regulation of actin filament dynamics. Can dephosphorylate and activate the actin binding/depolymerizing factor cofilin, which subsequently binds to actin filaments and stimulates their disassembly (By similarity).

**Cellular Location**

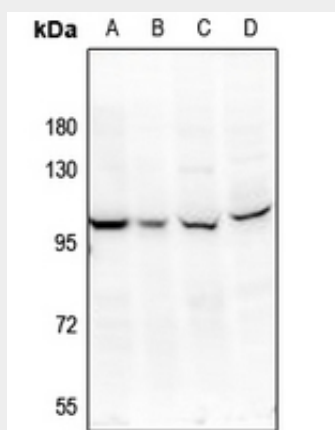
Cytoplasm, cytoskeleton. Nucleus

## Anti-SSH3 Antibody - Protocols

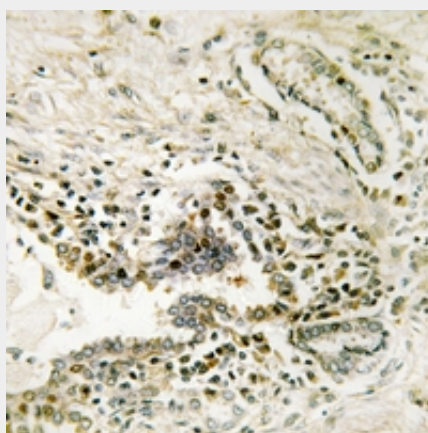
Provided below are standard protocols that you may find useful for product applications.

- [Western Blot](#)
- [Blocking Peptides](#)
- [Dot Blot](#)
- [Immunohistochemistry](#)
- [Immunofluorescence](#)
- [Immunoprecipitation](#)
- [Flow Cytometry](#)
- [Cell Culture](#)

## Anti-SSH3 Antibody - Images



Western blot analysis of SSH3 expression in HepG2 (A), MCF7 (B), PC12 (C), AML12 (D) whole cell lysates.



Immunohistochemical analysis of SSH3 staining in human lung cancer formalin fixed paraffin embedded tissue section. The section was pre-treated using heat mediated antigen retrieval with sodium citrate buffer (pH 6.0). The section was then incubated with the antibody at room temperature and detected using an HRP conjugated compact polymer system. DAB was used as the chromogen. The section was then counterstained with haematoxylin and mounted with DPX.

## Anti-SSH3 Antibody - Background

KLH-conjugated synthetic peptide encompassing a sequence within the center region of human

SSH3. The exact sequence is proprietary.