

**Anti-NDUFS6 Antibody**  
**Rabbit polyclonal antibody to NDUFS6**  
**Catalog # AP61220****Specification**

---

**Anti-NDUFS6 Antibody - Product Information**

Application	<b>WB</b>
Primary Accession	<a href="#">O75380</a>
Other Accession	<a href="#">P52503</a>
Reactivity	<b>Human, Mouse, Rat, Monkey, Bovine</b>
Host	<b>Rabbit</b>
Clonality	<b>Polyclonal</b>
Calculated MW	<b>13712</b>

**Anti-NDUFS6 Antibody - Additional Information****Gene ID** 4726**Other Names**NADH dehydrogenase [ubiquinone] iron-sulfur protein 6 mitochondrial; Complex I-13kD-A;  
CI-13kD-A; NADH-ubiquinone oxidoreductase 13 kDa-A subunit**Target/Specificity**

Recognizes endogenous levels of NDUFS6 protein.

**Dilution**

WB~~WB (1/500 - 1/1000), IH (1/50 - 1/200)

**Format**

Liquid in 0.42% Potassium phosphate, 0.87% Sodium chloride, pH 7.3, 30% glycerol, and 0.09% (W/V) sodium azide.

**Storage**

Store at -20 °C. Stable for 12 months from date of receipt

**Anti-NDUFS6 Antibody - Protein Information****Name** NDUFS6**Function**

Accessory subunit of the mitochondrial membrane respiratory chain NADH dehydrogenase (Complex I), that is believed not to be involved in catalysis. Complex I functions in the transfer of electrons from NADH to the respiratory chain. The immediate electron acceptor for the enzyme is believed to be ubiquinone.

**Cellular Location**

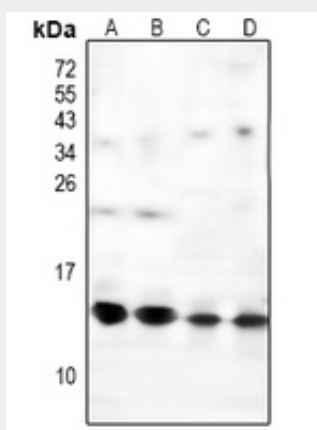
Mitochondrion inner membrane; Peripheral membrane protein; Matrix side

## Anti-NDUFS6 Antibody - Protocols

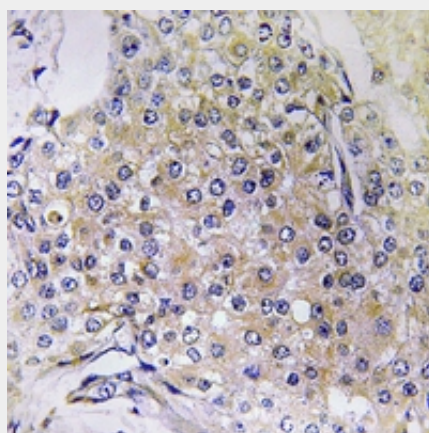
Provided below are standard protocols that you may find useful for product applications.

- [Western Blot](#)
- [Blocking Peptides](#)
- [Dot Blot](#)
- [Immunohistochemistry](#)
- [Immunofluorescence](#)
- [Immunoprecipitation](#)
- [Flow Cytometry](#)
- [Cell Culture](#)

## Anti-NDUFS6 Antibody - Images



Western blot analysis of NDUFS6 expression in U87MG (A), Panc1 (B), rat brain (C), mouse brain (D) whole cell lysates.



Immunohistochemical analysis of NDUFS6 staining in human breast cancer formalin fixed paraffin embedded tissue section. The section was pre-treated using heat mediated antigen retrieval with sodium citrate buffer (pH 6.0). The section was then incubated with the antibody at room temperature and detected using an HRP conjugated compact polymer system. DAB was used as the chromogen. The section was then counterstained with haematoxylin and mounted with DPX.

## Anti-NDUFS6 Antibody - Background

KLH-conjugated synthetic peptide encompassing a sequence within the C-term region of human

NDUFS6. The exact sequence is proprietary.