

Anti-MGST1 Antibody
Rabbit polyclonal antibody to MGST1
Catalog # AP61218

Specification

Anti-MGST1 Antibody - Product Information

| | |
|-------------------|------------------------|
| Application | WB |
| Primary Accession | P10620 |
| Reactivity | Human, Rat, Bovine |
| Host | Rabbit |
| Clonality | Polyclonal |
| Calculated MW | 17599 |

Anti-MGST1 Antibody - Additional Information

Gene ID 4257

Other Names

GST12; MGST; Microsomal glutathione S-transferase 1; Microsomal GST-1; Microsomal GST-I

Target/Specificity

Recognizes endogenous levels of MGST1 protein.

Dilution

WB~~WB (1/500 - 1/1000)

Format

Liquid in 0.42% Potassium phosphate, 0.87% Sodium chloride, pH 7.3, 30% glycerol, and 0.09% (W/V) sodium azide.

Storage

Store at -20 °C. Stable for 12 months from date of receipt

Anti-MGST1 Antibody - Protein Information

Name MGST1

Synonyms GST12, MGST

Function

Conjugation of reduced glutathione to a wide number of exogenous and endogenous hydrophobic electrophiles.

Cellular Location

Endoplasmic reticulum membrane {ECO:0000250|UniProtKB:P08011}; Multi-pass membrane protein. Mitochondrion outer membrane {ECO:0000250|UniProtKB:P08011}

Tissue Location

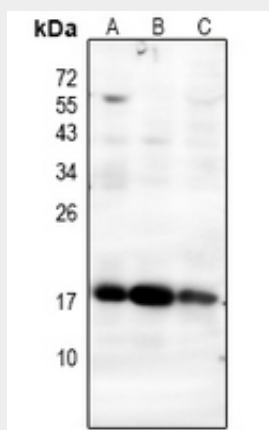
Highly expressed in liver.

Anti-MGST1 Antibody - Protocols

Provided below are standard protocols that you may find useful for product applications.

- [Western Blot](#)
- [Blocking Peptides](#)
- [Dot Blot](#)
- [Immunohistochemistry](#)
- [Immunofluorescence](#)
- [Immunoprecipitation](#)
- [Flow Cytometry](#)
- [Cell Culture](#)

Anti-MGST1 Antibody - Images



Western blot analysis of MGST1 expression in rat liver (A), HCC827 (B), HepG2 (C) whole cell lysates.

Anti-MGST1 Antibody - Background

KLH-conjugated synthetic peptide encompassing a sequence within the center region of human MGST1. The exact sequence is proprietary.