

Anti-LRP1B Antibody
Rabbit polyclonal antibody to LRP1B
Catalog # AP61216

Specification

Anti-LRP1B Antibody - Product Information

Application	WB
Primary Accession	O9NZR2
Other Accession	O9JI18
Reactivity	Human, Mouse, Rat
Host	Rabbit
Clonality	Polyclonal
Calculated MW	515498

Anti-LRP1B Antibody - Additional Information

Gene ID 53353

Other Names

LRPDIT; Low-density lipoprotein receptor-related protein 1B; LRP-1B; Low-density lipoprotein receptor-related protein-deleted in tumor; LRP-DIT

Target/Specificity

Recognizes endogenous levels of LRP1B protein.

Dilution

WB~~WB (1/500 - 1/1000)

Format

Liquid in 0.42% Potassium phosphate, 0.87% Sodium chloride, pH 7.3, 30% glycerol, and 0.09% (W/V) sodium azide.

Storage

Store at -20 °C. Stable for 12 months from date of receipt

Anti-LRP1B Antibody - Protein Information

Name LRP1B

Synonyms LRPDIT

Function

Potential cell surface proteins that bind and internalize ligands in the process of receptor-mediated endocytosis.

Cellular Location

Membrane; Single-pass type I membrane protein

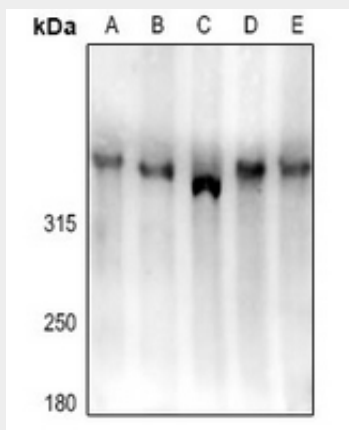
Tissue Location

Expressed in thyroid gland and in salivary gland, as well as in adult and fetal brain.

Anti-LRP1B Antibody - Protocols

Provided below are standard protocols that you may find useful for product applications.

- [Western Blot](#)
- [Blocking Peptides](#)
- [Dot Blot](#)
- [Immunohistochemistry](#)
- [Immunofluorescence](#)
- [Immunoprecipitation](#)
- [Flow Cytometry](#)
- [Cell Culture](#)

Anti-LRP1B Antibody - Images

Western blot analysis of LRP1B expression in A375 (A), HeLa (B), H9C2 (C), NIH3T3 (D), K562 (E) whole cell lysates.

Anti-LRP1B Antibody - Background

KLH-conjugated synthetic peptide encompassing a sequence within the N-term region of human LRP1B. The exact sequence is proprietary.