

Anti-POLR2J Antibody
Rabbit polyclonal antibody to POLR2J
Catalog # AP61211**Specification**

Anti-POLR2J Antibody - Product Information

Application	WB
Primary Accession	P52435
Other Accession	O08740
Reactivity	Human, Mouse, Rat, Bovine
Host	Rabbit
Clonality	Polyclonal
Calculated MW	13293

Anti-POLR2J Antibody - Additional Information**Gene ID** 5439**Other Names**

POLR2J1; DNA-directed RNA polymerase II subunit RPB11-a; RNA polymerase II subunit B11-a; RPB11a; DNA-directed RNA polymerase II subunit J-1; RNA polymerase II 13.3 kDa subunit

Target/Specificity

Recognizes endogenous levels of POLR2J protein.

Dilution

WB~~WB (1/500 - 1/1000)

Format

Liquid in 0.42% Potassium phosphate, 0.87% Sodium chloride, pH 7.3, 30% glycerol, and 0.09% (W/V) sodium azide.

Storage

Store at -20 °C. Stable for 12 months from date of receipt

Anti-POLR2J Antibody - Protein Information**Name** POLR2J**Synonyms** POLR2J1**Function**

Core component of RNA polymerase II (Pol II), a DNA-dependent RNA polymerase which synthesizes mRNA precursors and many functional non-coding RNAs using the four ribonucleoside triphosphates as substrates.

Cellular Location

Nucleus.

Tissue Location

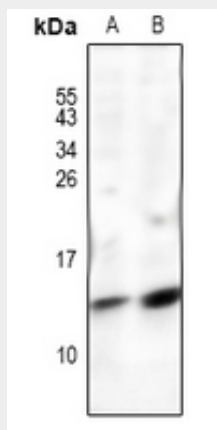
Ubiquitously expressed. High expression was found in heart and skeletal muscle.

Anti-POLR2J Antibody - Protocols

Provided below are standard protocols that you may find useful for product applications.

- [Western Blot](#)
- [Blocking Peptides](#)
- [Dot Blot](#)
- [Immunohistochemistry](#)
- [Immunofluorescence](#)
- [Immunoprecipitation](#)
- [Flow Cytometry](#)
- [Cell Culture](#)

Anti-POLR2J Antibody - Images



Western blot analysis of POLR2J expression in CT26 (A), PC12 (B) whole cell lysates.

Anti-POLR2J Antibody - Background

KLH-conjugated synthetic peptide encompassing a sequence within the N-term region of human POLR2J. The exact sequence is proprietary.