

**Anti-RAD23A Antibody**  
Rabbit polyclonal antibody to RAD23A  
Catalog # AP61204

### Specification

---

#### Anti-RAD23A Antibody - Product Information

Application	WB, IF
Primary Accession	<a href="#">P54725</a>
Reactivity	Human, Rat, Monkey, Bovine
Host	Rabbit
Clonality	Polyclonal
Calculated MW	39609

#### Anti-RAD23A Antibody - Additional Information

Gene ID 5886

#### Other Names

UV excision repair protein RAD23 homolog A; HR23A; hHR23A

#### Target/Specificity

Recognizes endogenous levels of RAD23A protein.

#### Dilution

WB~~WB (1/500 - 1/1000), IF/IC (1/100 - 1/500)

IF~~WB (1/500 - 1/1000), IF/IC (1/100 - 1/500)

#### Format

Liquid in 0.42% Potassium phosphate, 0.87% Sodium chloride, pH 7.3, 30% glycerol, and 0.09% (W/V) sodium azide.

#### Storage

Store at -20 °C. Stable for 12 months from date of receipt

#### Anti-RAD23A Antibody - Protein Information

Name RAD23A

#### Function

Multiubiquitin chain receptor involved in modulation of proteasomal degradation. Binds to 'Lys-48'-linked polyubiquitin chains in a length-dependent manner and with a lower affinity to 'Lys-63'-linked polyubiquitin chains. Proposed to be capable to bind simultaneously to the 26S proteasome and to polyubiquitinated substrates and to deliver ubiquitinated proteins to the proteasome. (Microbial infection) Involved in Vpr-dependent replication of HIV-1 in non-proliferating cells and primary macrophages. Required for the association of HIV-1 Vpr with the host proteasome.

#### Cellular Location

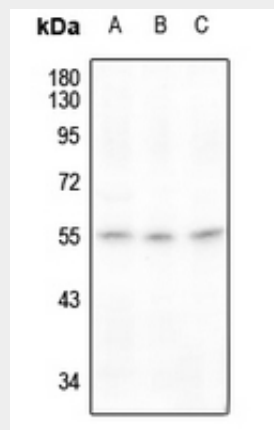
Nucleus.

### Anti-RAD23A Antibody - Protocols

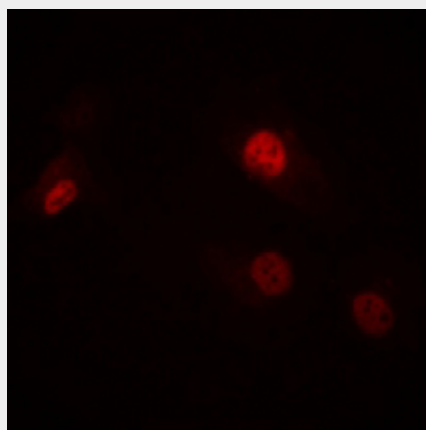
Provided below are standard protocols that you may find useful for product applications.

- [Western Blot](#)
- [Blocking Peptides](#)
- [Dot Blot](#)
- [Immunohistochemistry](#)
- [Immunofluorescence](#)
- [Immunoprecipitation](#)
- [Flow Cytometry](#)
- [Cell Culture](#)

### Anti-RAD23A Antibody - Images



Western blot analysis of RAD23A expression in Hela (A), HEK293T (B), rat testis (C) whole cell lysates.



Immunofluorescent analysis of RAD23A staining in A549 cells. Formalin-fixed cells were permeabilized with 0.1% Triton X-100 in TBS for 5-10 minutes and blocked with 3% BSA-PBS for 30 minutes at room temperature. Cells were probed with the primary antibody in 3% BSA-PBS and incubated overnight at 4 °C in a humidified chamber. Cells were washed with PBST and incubated with a Alexa Fluor 594-conjugated secondary antibody (red) in PBS at room temperature in the dark.

**Anti-RAD23A Antibody - Background**

KLH-conjugated synthetic peptide encompassing a sequence within the center region of human RAD23A. The exact sequence is proprietary.