

Anti-OB Cadherin Antibody
Rabbit polyclonal antibody to OB Cadherin
Catalog # AP61201

Specification

Anti-OB Cadherin Antibody - Product Information

Application	WB
Primary Accession	P55287
Other Accession	P55288
Reactivity	Human, Mouse, Rat, Monkey
Host	Rabbit
Clonality	Polyclonal
Calculated MW	87965

Anti-OB Cadherin Antibody - Additional Information

Gene ID 1009

Other Names

Cadherin-11; OSF-4; Osteoblast cadherin; OB-cadherin

Target/Specificity

Recognizes endogenous levels of OB Cadherin protein.

Dilution

WB~~WB (1/500 - 1/1000)

Format

Liquid in 0.42% Potassium phosphate, 0.87% Sodium chloride, pH 7.3, 30% glycerol, and 0.09% (W/V) sodium azide.

Storage

Store at -20 °C. Stable for 12 months from date of receipt

Anti-OB Cadherin Antibody - Protein Information

Name CDH11

Function

Cadherins are calcium-dependent cell adhesion proteins. They preferentially interact with themselves in a homophilic manner in connecting cells; cadherins may thus contribute to the sorting of heterogeneous cell types. Required for proper focal adhesion assembly (PubMed: [33811546](http://www.uniprot.org/citations/33811546)). Involved in the regulation of cell migration (PubMed: [33811546](http://www.uniprot.org/citations/33811546)).

Cellular Location

Cell membrane; Single-pass type I membrane protein

Tissue Location

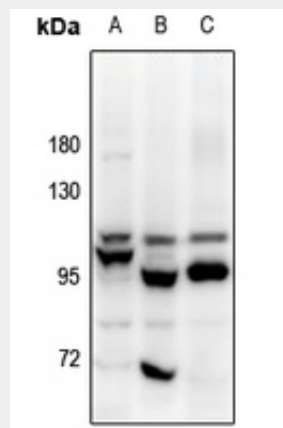
Expressed mainly in brain but also found in other tissues. Expressed in neuroblasts. In the embryo from 67 to 72 days of gestation, detected at high levels in facial mesenchyme including the central palatal mesenchyme, dental mesenchyme, the eye and optic muscle, and the tongue (at protein level) (PubMed:33811546)

Anti-OB Cadherin Antibody - Protocols

Provided below are standard protocols that you may find useful for product applications.

- [Western Blot](#)
- [Blocking Peptides](#)
- [Dot Blot](#)
- [Immunohistochemistry](#)
- [Immunofluorescence](#)
- [Immunoprecipitation](#)
- [Flow Cytometry](#)
- [Cell Culture](#)

Anti-OB Cadherin Antibody - Images



Western blot analysis of OB Cadherin expression in A2780 (A), HeLa (B), C6 (C) whole cell lysates.

Anti-OB Cadherin Antibody - Background

KLH-conjugated synthetic peptide encompassing a sequence within the center region of human OB Cadherin. The exact sequence is proprietary.