

**Anti-EGFR (pY1110) Antibody**  
Rabbit polyclonal antibody to EGFR (pY1110)  
Catalog # AP61178

### Specification

---

#### Anti-EGFR (pY1110) Antibody - Product Information

Application	WB
Primary Accession	<a href="#">P00533</a>
Reactivity	Human, Rat
Host	Rabbit
Clonality	Polyclonal
Calculated MW	134277

#### Anti-EGFR (pY1110) Antibody - Additional Information

Gene ID 1956

#### Other Names

ERBB; ERBB1; HER1; Epidermal growth factor receptor; Proto-oncogene c-ErbB-1; Receptor tyrosine-protein kinase erbB-1

#### Target/Specificity

Recognizes endogenous levels of EGFR (pY1110) protein.

#### Dilution

WB~~WB (1/500 - 1/1000)

#### Format

Liquid in 0.42% Potassium phosphate, 0.87% Sodium chloride, pH 7.3, 30% glycerol, and 0.09% (W/V) sodium azide.

#### Storage

Store at -20 °C. Stable for 12 months from date of receipt

#### Anti-EGFR (pY1110) Antibody - Protein Information

Name EGFR ([HGNC:3236](#))

Synonyms ERBB, ERBB1, HER1

#### Function

Receptor tyrosine kinase binding ligands of the EGF family and activating several signaling cascades to convert extracellular cues into appropriate cellular responses (PubMed:<a href="http://www.uniprot.org/citations/10805725" target="\_blank">10805725</a>, PubMed:<a href="http://www.uniprot.org/citations/27153536" target="\_blank">27153536</a>, PubMed:<a href="http://www.uniprot.org/citations/2790960" target="\_blank">2790960</a>, PubMed:<a href="http://www.uniprot.org/citations/35538033" target="\_blank">35538033</a>). Known ligands include EGF, TGFA/TGF- alpha, AREG, epigen/EPGN, BTC/betacellulin, epiregulin/EREG and

HBEGF/heparin-binding EGF (PubMed:<a href="http://www.uniprot.org/citations/12297049" target="\_blank">12297049</a>, PubMed:<a href="http://www.uniprot.org/citations/15611079" target="\_blank">15611079</a>, PubMed:<a href="http://www.uniprot.org/citations/17909029" target="\_blank">17909029</a>, PubMed:<a href="http://www.uniprot.org/citations/20837704" target="\_blank">20837704</a>, PubMed:<a href="http://www.uniprot.org/citations/27153536" target="\_blank">27153536</a>, PubMed:<a href="http://www.uniprot.org/citations/2790960" target="\_blank">2790960</a>, PubMed:<a href="http://www.uniprot.org/citations/7679104" target="\_blank">7679104</a>, PubMed:<a href="http://www.uniprot.org/citations/8144591" target="\_blank">8144591</a>, PubMed:<a href="http://www.uniprot.org/citations/9419975" target="\_blank">9419975</a>). Ligand binding triggers receptor homo- and/or heterodimerization and autophosphorylation on key cytoplasmic residues. The phosphorylated receptor recruits adapter proteins like GRB2 which in turn activates complex downstream signaling cascades. Activates at least 4 major downstream signaling cascades including the RAS-RAF-MEK-ERK, PI3 kinase-AKT, PLCgamma-PKC and STATs modules (PubMed:<a href="http://www.uniprot.org/citations/27153536" target="\_blank">27153536</a>). May also activate the NF-kappa-B signaling cascade (PubMed:<a href="http://www.uniprot.org/citations/11116146" target="\_blank">11116146</a>). Also directly phosphorylates other proteins like RGS16, activating its GTPase activity and probably coupling the EGF receptor signaling to the G protein-coupled receptor signaling (PubMed:<a href="http://www.uniprot.org/citations/11602604" target="\_blank">11602604</a>). Also phosphorylates MUC1 and increases its interaction with SRC and CTNNB1/beta-catenin (PubMed:<a href="http://www.uniprot.org/citations/11483589" target="\_blank">11483589</a>). Positively regulates cell migration via interaction with CDC88A/GIV which retains EGFR at the cell membrane following ligand stimulation, promoting EGFR signaling which triggers cell migration (PubMed:<a href="http://www.uniprot.org/citations/20462955" target="\_blank">20462955</a>). Plays a role in enhancing learning and memory performance (By similarity). Plays a role in mammalian pain signaling (long-lasting hypersensitivity) (By similarity).

#### Cellular Location

Cell membrane; Single-pass type I membrane protein. Endoplasmic reticulum membrane; Single-pass type I membrane protein Golgi apparatus membrane; Single-pass type I membrane protein. Nucleus membrane; Single-pass type I membrane protein. Endosome. Endosome membrane. Nucleus. Note=In response to EGF, translocated from the cell membrane to the nucleus via Golgi and ER (PubMed:17909029, PubMed:20674546). Endocytosed upon activation by ligand (PubMed:17182860, PubMed:17909029, PubMed:27153536, PubMed:2790960). Colocalized with GPER1 in the nucleus of estrogen agonist-induced cancer-associated fibroblasts (CAF) (PubMed:20551055)

#### Tissue Location

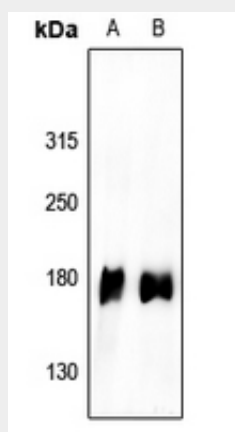
Ubiquitously expressed. Isoform 2 is also expressed in ovarian cancers.

#### Anti-EGFR (pY1110) Antibody - Protocols

Provided below are standard protocols that you may find useful for product applications.

- [Western Blot](#)
- [Blocking Peptides](#)
- [Dot Blot](#)
- [Immunohistochemistry](#)
- [Immunofluorescence](#)
- [Immunoprecipitation](#)
- [Flow Cytometry](#)
- [Cell Culture](#)

#### Anti-EGFR (pY1110) Antibody - Images



Western blot analysis of EGFR (pY1110) expression in PMVEC (A), HCC827 (B) whole cell lysates.

#### **Anti-EGFR (pY1110) Antibody - Background**

KLH-conjugated synthetic peptide encompassing a sequence within the C-term region of human EGFR (pY1110). The exact sequence is proprietary.