

Anti-JNK1/2/3 (pY185) Antibody
Rabbit polyclonal antibody to JNK1/2/3 (pY185)
Catalog # AP61176

Specification

Anti-JNK1/2/3 (pY185) Antibody - Product Information

Application	WB
Primary Accession	P45983 , P45984 , P53779
Other Accession	O91Y86 , O9WTU6 , O61831
Reactivity	Human, Mouse, Rat
Host	Rabbit
Clonality	Polyclonal

Anti-JNK1/2/3 (pY185) Antibody - Additional Information

Other Names

MAPK8; JNK1; PRKM8; SAPK1; SAPK1C; Mitogen-activated protein kinase 8; MAP kinase 8; JNK-46; Stress-activated protein kinase 1c; SAPK1c; Stress-activated protein kinase JNK1; c-Jun N-terminal kinase 1; MAPK9; JNK2; PRKM9; SAPK1A; Mitogen-activated protein kinase 9; MAP kinase 9; JNK-55; Stress-activated protein kinase 1a; SAPK1a; Stress-activated protein kinase JNK2; c-Jun N-terminal kinase 2; MAPK10; JNK3; JNK3A; PRKM10; SAPK1B; Mitogen-activated protein kinase 10; MAP kinase 10; MAP kinase p49 3F12; Stress-activated protein kinase 1b; SAPK1b; Stress-activated protein kinase JNK3; c-Jun N-terminal kinase 3

Target/Specificity

Recognizes endogenous levels of JNK1/2/3 (pY185) protein.

Dilution

WB~~WB (1/500 - 1/1000), IH (1/50 - 1/200)

Format

Liquid in 0.42% Potassium phosphate, 0.87% Sodium chloride, pH 7.3, 30% glycerol, and 0.09% (W/V) sodium azide.

Storage

Store at -20 °C. Stable for 12 months from date of receipt

Anti-JNK1/2/3 (pY185) Antibody - Protein Information

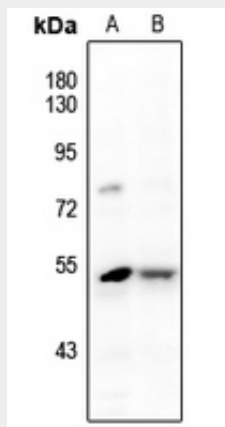
Anti-JNK1/2/3 (pY185) Antibody - Protocols

Provided below are standard protocols that you may find useful for product applications.

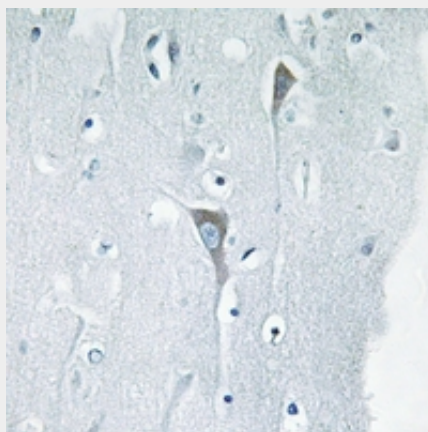
- [Western Blot](#)
- [Blocking Peptides](#)
- [Dot Blot](#)

- [Immunohistochemistry](#)
- [Immunofluorescence](#)
- [Immunoprecipitation](#)
- [Flow Cytometry](#)
- [Cell Culture](#)

Anti-JNK1/2/3 (pY185) Antibody - Images



Western blot analysis of JNK1/2/3 (pY185) expression in HCT116 (A), U87MG (B) whole cell lysates.



Immunohistochemical analysis of JNK1/2/3 (pY185) staining in human brain formalin fixed paraffin embedded tissue section. The section was pre-treated using heat mediated antigen retrieval with sodium citrate buffer (pH 6.0). The section was then incubated with the antibody at room temperature and detected using an HRP conjugated compact polymer system. DAB was used as the chromogen. The section was then counterstained with haematoxylin and mounted with DPX.

Anti-JNK1/2/3 (pY185) Antibody - Background

KLH-conjugated synthetic peptide encompassing a sequence within the center region of human JNK1/2/3 (pY185). The exact sequence is proprietary.