

Anti-Topoisomerase 2 alpha (pS1106) Antibody
Rabbit polyclonal antibody to Topoisomerase 2 alpha (pS1106)
Catalog # AP61172

Specification

Anti-Topoisomerase 2 alpha (pS1106) Antibody - Product Information

Application	WB
Primary Accession	P11388
Other Accession	Q01320
Reactivity	Human, Mouse, Rat, Pig
Host	Rabbit
Clonality	Polyclonal
Calculated MW	174385

Anti-Topoisomerase 2 alpha (pS1106) Antibody - Additional Information

Gene ID 7153

Other Names

TOP2; DNA topoisomerase 2-alpha; DNA topoisomerase II alpha isozyme

Target/Specificity

Recognizes endogenous levels of Topoisomerase 2 alpha (pS1106) protein.

Dilution

WB~~WB (1/500 - 1/1000), IH (1/50 - 1/200)

Format

Liquid in 0.42% Potassium phosphate, 0.87% Sodium chloride, pH 7.3, 30% glycerol, and 0.09% (W/V) sodium azide.

Storage

Store at -20 °C. Stable for 12 months from date of receipt

Anti-Topoisomerase 2 alpha (pS1106) Antibody - Protein Information

Name TOP2A

Synonyms TOP2

Function

Key decatenating enzyme that alters DNA topology by binding to two double-stranded DNA molecules, generating a double-stranded break in one of the strands, passing the intact strand through the broken strand, and religating the broken strand (PubMed: [17567603](http://www.uniprot.org/citations/17567603), PubMed: [18790802](http://www.uniprot.org/citations/18790802), PubMed: [22013166](http://www.uniprot.org/citations/22013166), PubMed: [22323612](http://www.uniprot.org/citations/22323612)). May play a

role in regulating the period length of BMAL1 transcriptional oscillation (By similarity).

Cellular Location

Cytoplasm. Nucleus, nucleoplasm. Nucleus. Nucleus, nucleolus

Tissue Location

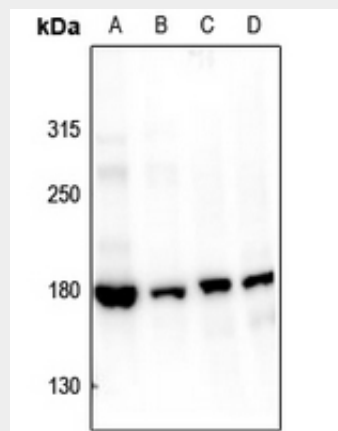
Expressed in the tonsil, spleen, lymph node, thymus, skin, pancreas, testis, colon, kidney, liver, brain and lung (PubMed:9155056). Also found in high-grade lymphomas, squamous cell lung tumors and seminomas (PubMed:9155056)

Anti-Topoisomerase 2 alpha (pS1106) Antibody - Protocols

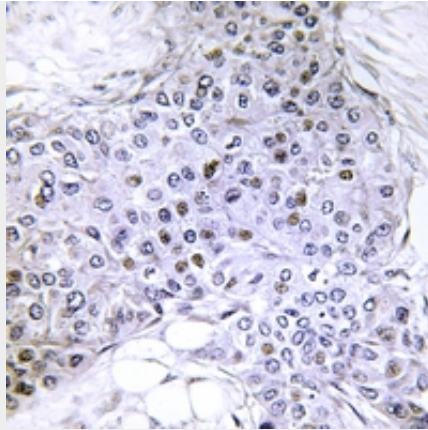
Provided below are standard protocols that you may find useful for product applications.

- [Western Blot](#)
- [Blocking Peptides](#)
- [Dot Blot](#)
- [Immunohistochemistry](#)
- [Immunofluorescence](#)
- [Immunoprecipitation](#)
- [Flow Cytometry](#)
- [Cell Culture](#)

Anti-Topoisomerase 2 alpha (pS1106) Antibody - Images



Western blot analysis of Topoisomerase 2 alpha (pS1106) expression in Myla2059 (A), HuT78 (B), mouse testis (C), rat testis (D) whole cell lysates.



Immunohistochemical analysis of Topoisomerase 2 alpha (pS1106) staining in human breast cancer formalin fixed paraffin embedded tissue section. The section was pre-treated using heat mediated antigen retrieval with sodium citrate buffer (pH 6.0). The section was then incubated with the antibody at room temperature and detected using an HRP conjugated compact polymer system. DAB was used as the chromogen. The section was then counterstained with haematoxylin and mounted with DPX.

Anti-Topoisomerase 2 alpha (pS1106) Antibody - Background

KLH-conjugated synthetic peptide encompassing a sequence within the center region of human Topoisomerase 2 alpha (pS1106). The exact sequence is proprietary.