

Anti-Caspase 9 (pS144) Antibody
Rabbit polyclonal antibody to Caspase 9 (pS144)
Catalog # AP61154

Specification

Anti-Caspase 9 (pS144) Antibody - Product Information

Application	WB
Primary Accession	P55211
Other Accession	Q8C3Q9
Reactivity	Human, Mouse, Monkey
Host	Rabbit
Clonality	Polyclonal
Calculated MW	46281

Anti-Caspase 9 (pS144) Antibody - Additional Information

Gene ID 842

Other Names

MCH6; Caspase-9; CASP-9; Apoptotic protease Mch-6; Apoptotic protease-activating factor 3; APAF-3; ICE-like apoptotic protease 6; ICE-LAP6

Target/Specificity

Recognizes endogenous levels of Caspase 9 (pS144) protein.

Dilution

WB~~WB (1/500 - 1/1000), IH (1/50 - 1/200)

Format

Liquid in 0.42% Potassium phosphate, 0.87% Sodium chloride, pH 7.3, 30% glycerol, and 0.09% (W/V) sodium azide.

Storage

Store at -20 °C. Stable for 12 months from date of receipt

Anti-Caspase 9 (pS144) Antibody - Protein Information

Name CASP9

Synonyms MCH6

Function

Involved in the activation cascade of caspases responsible for apoptosis execution. Binding of caspase-9 to Apaf-1 leads to activation of the protease which then cleaves and activates effector caspases caspase-3 (CASP3) or caspase-7 (CASP7). Promotes DNA damage- induced apoptosis in a ABL1/c-Abl-dependent manner. Proteolytically cleaves poly(ADP-ribose) polymerase (PARP).

Tissue Location

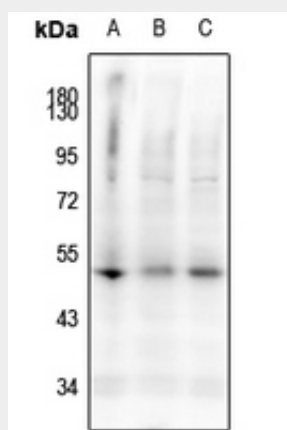
Ubiquitous, with highest expression in the heart, moderate expression in liver, skeletal muscle, and pancreas. Low levels in all other tissues. Within the heart, specifically expressed in myocytes.

Anti-Caspase 9 (pS144) Antibody - Protocols

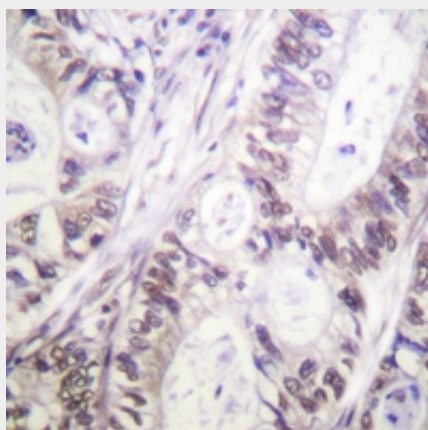
Provided below are standard protocols that you may find useful for product applications.

- [Western Blot](#)
- [Blocking Peptides](#)
- [Dot Blot](#)
- [Immunohistochemistry](#)
- [Immunofluorescence](#)
- [Immunoprecipitation](#)
- [Flow Cytometry](#)
- [Cell Culture](#)

Anti-Caspase 9 (pS144) Antibody - Images



Western blot analysis of Caspase 9 (pS144) expression in HEK293T (A), HepG2 (B), A375 (C) whole cell lysates.



Immunohistochemical analysis of Caspase 9 (pS144) staining in human colon cancer formalin fixed paraffin embedded tissue section. The section was pre-treated using heat mediated antigen retrieval with sodium citrate buffer (pH 6.0). The section was then incubated with the antibody at room temperature and detected using an HRP conjugated compact polymer system. DAB was used as the chromogen. The section was then counterstained with haematoxylin and mounted

with DPX.

Anti-Caspase 9 (pS144) Antibody - Background

KLH-conjugated synthetic peptide encompassing a sequence within the center region of human Caspase 9 (pS144). The exact sequence is proprietary.