

**Anti-Thymidine Kinase 1 (pS13) Antibody**  
Rabbit polyclonal antibody to Thymidine Kinase 1 (pS13)  
Catalog # AP61147

## Specification

---

### Anti-Thymidine Kinase 1 (pS13) Antibody - Product Information

Application	WB
Primary Accession	<a href="#">P04183</a>
Other Accession	<a href="#">P04184</a>
Reactivity	Human, Mouse, Rat, Bovine
Host	Rabbit
Clonality	Polyclonal
Calculated MW	25469

### Anti-Thymidine Kinase 1 (pS13) Antibody - Additional Information

**Gene ID** 7083

#### Other Names

Thymidine kinase cytosolic

#### Target/Specificity

Recognizes endogenous levels of Thymidine Kinase 1 (pS13) protein.

#### Dilution

WB~~WB (1/500 - 1/1000), IH (1/50 - 1/200)

#### Format

Liquid in 0.42% Potassium phosphate, 0.87% Sodium chloride, pH 7.3, 30% glycerol, and 0.09% (W/V) sodium azide.

#### Storage

Store at -20 °C. Stable for 12 months from date of receipt

### Anti-Thymidine Kinase 1 (pS13) Antibody - Protein Information

**Name** TK1 ([HGNC:11830](#))

#### Function

Cell-cycle-regulated enzyme of importance in nucleotide metabolism (PubMed: [9575153](http://www.uniprot.org/citations/9575153)). Catalyzes the first enzymatic step in the salvage pathway converting thymidine into thymidine monophosphate (PubMed: [22385435](http://www.uniprot.org/citations/22385435)). Transcriptional regulation limits expression to the S phase of the cell cycle and transient expression coincides with the oscillation in the intracellular dTTP concentration (Probable). Also important for the activation of anticancer and antiviral nucleoside analog prodrugs such as 1-b-d-arabinofuranosylcytosine (AraC) and 3c- azido-3c-deoxythymidine (AZT) (PubMed: [22385435](http://www.uniprot.org/citations/22385435)).

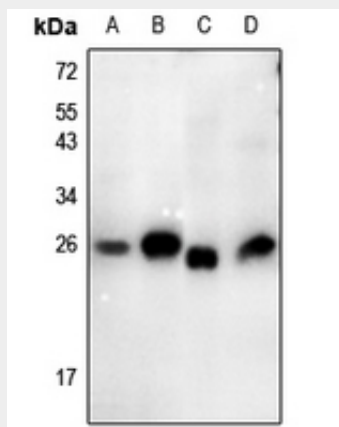
**Cellular Location**  
Cytoplasm.

### Anti-Thymidine Kinase 1 (pS13) Antibody - Protocols

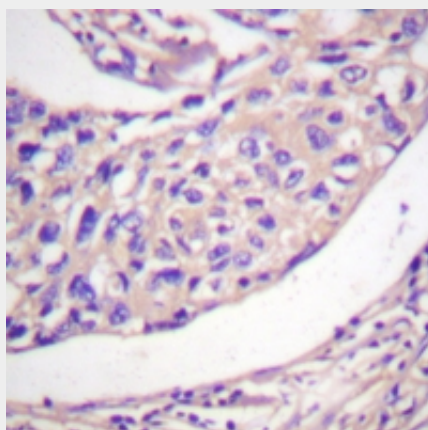
Provided below are standard protocols that you may find useful for product applications.

- [Western Blot](#)
- [Blocking Peptides](#)
- [Dot Blot](#)
- [Immunohistochemistry](#)
- [Immunofluorescence](#)
- [Immunoprecipitation](#)
- [Flow Cytometry](#)
- [Cell Culture](#)

### Anti-Thymidine Kinase 1 (pS13) Antibody - Images



Western blot analysis of Thymidine Kinase 1 (pS13) expression in A375 (A), HCT116 (B), Myla2059 (C), Jurkat (D) whole cell lysates.



Immunohistochemical analysis of Thymidine Kinase 1 (pS13) staining in human breast cancer formalin fixed paraffin embedded tissue section. The section was pre-treated using heat mediated antigen retrieval with sodium citrate buffer (pH 6.0). The section was then incubated with the antibody at room temperature and detected using an HRP conjugated compact polymer system. DAB was used as the chromogen. The section was then counterstained with haematoxylin and

mounted with DPX.

### **Anti-Thymidine Kinase 1 (pS13) Antibody - Background**

KLH-conjugated synthetic peptide encompassing a sequence within the N-term region of human Thymidine Kinase 1 (pS13). The exact sequence is proprietary.