

**Anti-FOXO1/3 (pS322+S325/pS318+S321) Antibody**  
Rabbit polyclonal antibody to FOXO1/3 (pS322+S325/pS318+S321)  
Catalog # AP61140

### Specification

---

#### Anti-FOXO1/3 (pS322+S325/pS318+S321) Antibody - Product Information

Application	WB
Primary Accession	<a href="#">O12778</a> , <a href="#">O43524</a>
Other Accession	<a href="#">O9R1E0</a> , <a href="#">O9WVH4</a>
Reactivity	Human, Mouse, Rat, Pig, Bovine
Host	Rabbit
Clonality	Polyclonal

#### Anti-FOXO1/3 (pS322+S325/pS318+S321) Antibody - Additional Information

##### Other Names

FOXO1; FKHR; FOXO1A; Forkhead box protein O1; Forkhead box protein O1A; Forkhead in rhabdomyosarcoma; FOXO3; FKHL1; FOXO3A; Forkhead box protein O3; AF6q21 protein; Forkhead in rhabdomyosarcoma-like 1

##### Target/Specificity

Recognizes endogenous levels of FOXO1/3 (pS322+S325/pS318+S321) protein.

##### Dilution

WB~~WB (1/500 - 1/1000), IH (1/50 - 1/200)

##### Format

Liquid in 0.42% Potassium phosphate, 0.87% Sodium chloride, pH 7.3, 30% glycerol, and 0.09% (W/V) sodium azide.

##### Storage

Store at -20 °C. Stable for 12 months from date of receipt

#### Anti-FOXO1/3 (pS322+S325/pS318+S321) Antibody - Protein Information

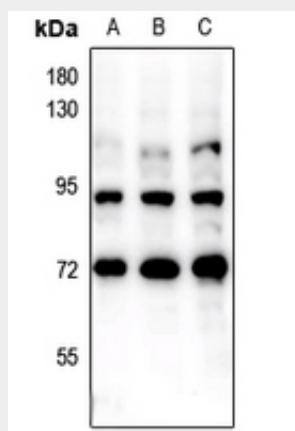
#### Anti-FOXO1/3 (pS322+S325/pS318+S321) Antibody - Protocols

Provided below are standard protocols that you may find useful for product applications.

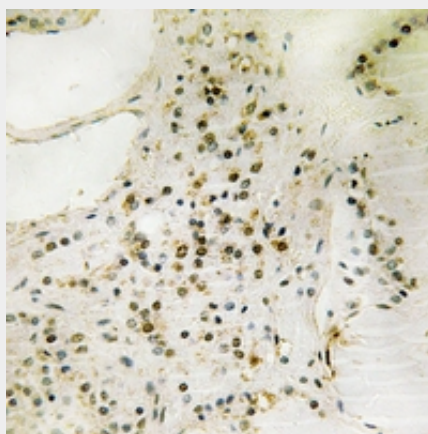
- [Western Blot](#)
- [Blocking Peptides](#)
- [Dot Blot](#)
- [Immunohistochemistry](#)
- [Immunofluorescence](#)
- [Immunoprecipitation](#)
- [Flow Cytometry](#)

- [Cell Culture](#)

### Anti-FOXO1/3 (pS322+S325/pS318+S321) Antibody - Images



Western blot analysis of FOXO1/3 (pS322+S325/pS318+S321) expression in Beas2B (A), A549 (B), HepG2 (C) whole cell lysates.



Immunohistochemical analysis of FOXO1/3 (pS322+S325/pS318+S321) staining in human thyroid gland formalin fixed paraffin embedded tissue section. The section was pre-treated using heat mediated antigen retrieval with sodium citrate buffer (pH 6.0). The section was then incubated with the antibody at room temperature and detected using an HRP conjugated compact polymer system. DAB was used as the chromogen. The section was then counterstained with haematoxylin and mounted with DPX.

### Anti-FOXO1/3 (pS322+S325/pS318+S321) Antibody - Background

KLH-conjugated synthetic peptide encompassing a sequence within the center region of human FOXO1/3 (pS322+S325/pS318+S321). The exact sequence is proprietary.