

Anti-MPP6 Antibody
Rabbit polyclonal antibody to MPP6
Catalog # AP61128

Specification

Anti-MPP6 Antibody - Product Information

Application	WB
Primary Accession	O9NZW5
Other Accession	O9JLB0
Reactivity	Human, Mouse
Host	Rabbit
Clonality	Polyclonal
Calculated MW	61117

Anti-MPP6 Antibody - Additional Information

Gene ID 51678

Other Names

VAM1; MAGUK p55 subfamily member 6; Veli-associated MAGUK 1; VAM-1

Target/Specificity

Recognizes endogenous levels of MPP6 protein.

Dilution

WB~~WB (1/500 - 1/1000)

Format

Liquid in 0.42% Potassium phosphate, 0.87% Sodium chloride, pH 7.3, 30% glycerol, and 0.09% (W/V) sodium azide.

Storage

Store at -20 °C. Stable for 12 months from date of receipt

Anti-MPP6 Antibody - Protein Information

Name PALS2 ([HGNC:18167](#))

Synonyms MPP6, VAM1

Cellular Location

Membrane; Peripheral membrane protein

Tissue Location

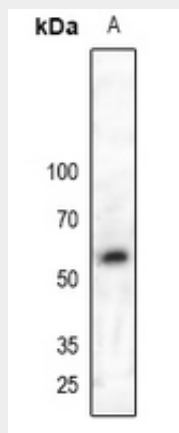
Abundant in testis, brain, and kidney with lower levels detectable in other tissues

Anti-MPP6 Antibody - Protocols

Provided below are standard protocols that you may find useful for product applications.

- [Western Blot](#)
- [Blocking Peptides](#)
- [Dot Blot](#)
- [Immunohistochemistry](#)
- [Immunofluorescence](#)
- [Immunoprecipitation](#)
- [Flow Cytometry](#)
- [Cell Culture](#)

Anti-MPP6 Antibody - Images



Western blot analysis of MPP6 expression in HEK293T (A) whole cell lysates.

Anti-MPP6 Antibody - Background

KLH-conjugated synthetic peptide encompassing a sequence within the C-term region of human MPP6. The exact sequence is proprietary.