

**Anti-PAX6 Antibody**  
Rabbit polyclonal antibody to PAX6  
Catalog # AP61127

## Specification

---

### Anti-PAX6 Antibody - Product Information

Application	WB
Primary Accession	<a href="#">P26367</a>
Other Accession	<a href="#">P63015</a>
Reactivity	Human, Mouse, Rat, Zebrafish, Chicken, Bovine
Host	Rabbit
Clonality	Polyclonal
Calculated MW	46683

### Anti-PAX6 Antibody - Additional Information

**Gene ID** 5080

#### Other Names

AN2; Paired box protein Pax-6; Aniridia type II protein; Oculorhombin

#### Target/Specificity

Recognizes endogenous levels of PAX6 protein.

#### Dilution

WB~~WB (1/500 - 1/1000)

#### Format

Liquid in 0.42% Potassium phosphate, 0.87% Sodium chloride, pH 7.3, 30% glycerol, and 0.09% (W/V) sodium azide.

#### Storage

Store at -20 °C. Stable for 12 months from date of receipt

### Anti-PAX6 Antibody - Protein Information

**Name** PAX6

**Synonyms** AN2

#### Function

Transcription factor with important functions in the development of the eye, nose, central nervous system and pancreas. Required for the differentiation of pancreatic islet alpha cells (By similarity). Competes with PAX4 in binding to a common element in the glucagon, insulin and somatostatin promoters. Regulates specification of the ventral neuron subtypes by establishing the correct progenitor domains (By similarity). Acts as a transcriptional repressor of NFATC1- mediated gene expression (By similarity).

**Cellular Location**

Nucleus {ECO:0000250|UniProtKB:P63015}. [Isoform 5a]: Nucleus {ECO:0000250|UniProtKB:P63016}

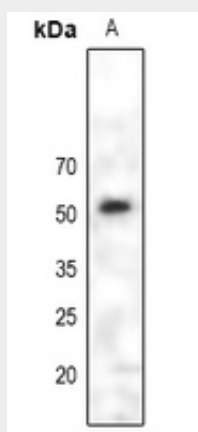
**Tissue Location**

[Isoform 1]: Expressed in lymphoblasts.

**Anti-PAX6 Antibody - Protocols**

Provided below are standard protocols that you may find useful for product applications.

- [Western Blot](#)
- [Blocking Peptides](#)
- [Dot Blot](#)
- [Immunohistochemistry](#)
- [Immunofluorescence](#)
- [Immunoprecipitation](#)
- [Flow Cytometry](#)
- [Cell Culture](#)

**Anti-PAX6 Antibody - Images**

Western blot analysis of PAX6 expression in HEK293T (A) whole cell lysates.

**Anti-PAX6 Antibody - Background**

KLH-conjugated synthetic peptide encompassing a sequence within the center region of human PAX6. The exact sequence is proprietary.