

Anti-Oligo2 Antibody
Rabbit polyclonal antibody to Oligo2
Catalog # AP61126

Specification

Anti-Oligo2 Antibody - Product Information

Application	WB
Primary Accession	O13516
Other Accession	O9EQW6
Reactivity	Human, Mouse, Rat
Host	Rabbit
Clonality	Polyclonal
Calculated MW	32385

Anti-Oligo2 Antibody - Additional Information

Gene ID 10215

Other Names

BHLHB1; BHLHE19; PRKCBP2; RACK17; Oligodendrocyte transcription factor 2; Oligo2; Class B basic helix-loop-helix protein 1; bHLHb1; Class E basic helix-loop-helix protein 19; bHLHe19; Protein kinase C-binding protein 2; Protein kinase C-binding protein RACK17

Target/Specificity

Recognizes endogenous levels of Oligo2 protein.

Dilution

WB~~WB (1/500 - 1/1000)

Format

Liquid in 0.42% Potassium phosphate, 0.87% Sodium chloride, pH 7.3, 30% glycerol, and 0.09% (W/V) sodium azide.

Storage

Store at -20 °C. Stable for 12 months from date of receipt

Anti-Oligo2 Antibody - Protein Information

Name OLIG2

Synonyms BHLHB1, BHLHE19, PRKCBP2, RACK17

Function

Required for oligodendrocyte and motor neuron specification in the spinal cord, as well as for the development of somatic motor neurons in the hindbrain. Functions together with ZNF488 to promote oligodendrocyte differentiation. Cooperates with OLIG1 to establish the pMN domain of the embryonic neural tube. Antagonist of V2 interneuron and of NKX2-2-induced V3 interneuron development.

Cellular Location

Nucleus {ECO:0000255|PROSITE-ProRule:PRU00981}. Cytoplasm. Note=The NLS contained in the bHLH domain could be masked in the native form and translocation to the nucleus could be mediated by interaction either with class E bHLH partner protein or with NKX2-2.

Tissue Location

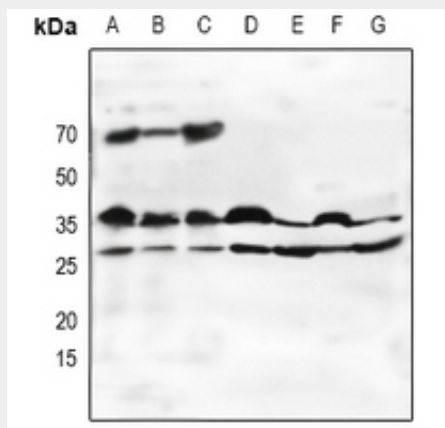
Expressed in the brain, in oligodendrocytes. Strongly expressed in oligodendrogliomas, while expression is weak to moderate in astrocytomas. Expression in glioblastomas highly variable

Anti-Oligo2 Antibody - Protocols

Provided below are standard protocols that you may find useful for product applications.

- [Western Blot](#)
- [Blocking Peptides](#)
- [Dot Blot](#)
- [Immunohistochemistry](#)
- [Immunofluorescence](#)
- [Immunoprecipitation](#)
- [Flow Cytometry](#)
- [Cell Culture](#)

Anti-Oligo2 Antibody - Images



Western blot analysis of Oligo2 expression in HEK293T (A), Hela (B), LO2 (C), mouse brain (D), mouse muscle (E), rat brain (F), rat muscle (G) whole cell lysates.

Anti-Oligo2 Antibody - Background

KLH-conjugated synthetic peptide encompassing a sequence within the center region of human Oligo2. The exact sequence is proprietary.