

Anti-CD360 Antibody
Rabbit polyclonal antibody to CD360
Catalog # AP61125

Specification

Anti-CD360 Antibody - Product Information

Application	WB
Primary Accession	O9HBE5
Other Accession	O9JHX3
Reactivity	Human, Mouse
Host	Rabbit
Clonality	Polyclonal
Calculated MW	59130

Anti-CD360 Antibody - Additional Information

Gene ID 50615

Other Names

NILR; Interleukin-21 receptor; IL-21 receptor; IL-21R; Novel interleukin receptor; CD360

Target/Specificity

Recognizes endogenous levels of CD360 protein.

Dilution

WB~~WB (1/500 - 1/1000)

Format

Liquid in 0.42% Potassium phosphate, 0.87% Sodium chloride, pH 7.3, 30% glycerol, and 0.09% (W/V) sodium azide.

Storage

Store at -20 °C. Stable for 12 months from date of receipt

Anti-CD360 Antibody - Protein Information

Name IL21R

Synonyms NILR

Function

This is a receptor for interleukin-21.

Cellular Location

Membrane; Single-pass type I membrane protein.

Tissue Location

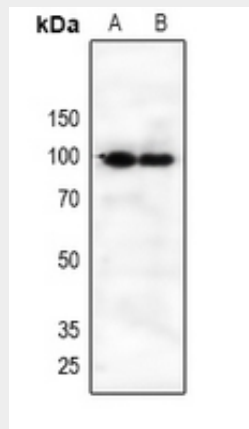
Selectively expressed in lymphoid tissues. Most highly expressed in thymus and spleen

Anti-CD360 Antibody - Protocols

Provided below are standard protocols that you may find useful for product applications.

- [Western Blot](#)
- [Blocking Peptides](#)
- [Dot Blot](#)
- [Immunohistochemistry](#)
- [Immunofluorescence](#)
- [Immunoprecipitation](#)
- [Flow Cytometry](#)
- [Cell Culture](#)

Anti-CD360 Antibody - Images



Western blot analysis of CD360 expression in HEK293T (A), A549 (B) whole cell lysates.

Anti-CD360 Antibody - Background

KLH-conjugated synthetic peptide encompassing a sequence within the center region of human CD360. The exact sequence is proprietary.