

**Anti-CCR5 Antibody**  
Rabbit polyclonal antibody to CCR5  
Catalog # AP61109

**Specification**

---

**Anti-CCR5 Antibody - Product Information**

Application	WB
Primary Accession	<a href="#">P51681</a>
Other Accession	<a href="#">P51682</a>
Reactivity	Human, Mouse, Monkey, Bovine
Host	Rabbit
Clonality	Polyclonal
Calculated MW	40524

**Anti-CCR5 Antibody - Additional Information**

Gene ID 1234

**Other Names**

CMKBR5; C-C chemokine receptor type 5; C-C CKR-5; CC-CKR-5; CCR-5; CCR5; CHEMR13; HIV-1 fusion coreceptor; CD195

**Target/Specificity**

Recognizes endogenous levels of CCR5 protein.

**Dilution**

WB~~WB (1/500 - 1/1000)

**Format**

Liquid in 0.42% Potassium phosphate, 0.87% Sodium chloride, pH 7.3, 30% glycerol, and 0.09% (W/V) sodium azide.

**Storage**

Store at -20 °C. Stable for 12 months from date of receipt

**Anti-CCR5 Antibody - Protein Information**

Name CCR5 ([HGNC:1606](#))

Synonyms CMKBR5

**Function**

Receptor for a number of inflammatory CC-chemokines including CCL3/MIP-1-alpha, CCL4/MIP-1-beta and RANTES and subsequently transduces a signal by increasing the intracellular calcium ion level. May play a role in the control of granulocytic lineage proliferation or differentiation. Participates in T-lymphocyte migration to the infection site by acting as a chemotactic receptor (PubMed: <a href="http://www.uniprot.org/citations/30713770" target="\_blank">30713770</a>).

### Cellular Location

Cell membrane; Multi-pass membrane protein

### Tissue Location

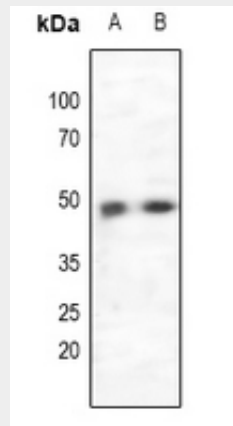
Highly expressed in spleen, thymus, in the myeloid cell line THP-1, in the promyeloblastic cell line KG-1a and on CD4+ and CD8+ T-cells. Medium levels in peripheral blood leukocytes and in small intestine. Low levels in ovary and lung.

### Anti-CCR5 Antibody - Protocols

Provided below are standard protocols that you may find useful for product applications.

- [Western Blot](#)
- [Blocking Peptides](#)
- [Dot Blot](#)
- [Immunohistochemistry](#)
- [Immunofluorescence](#)
- [Immunoprecipitation](#)
- [Flow Cytometry](#)
- [Cell Culture](#)

### Anti-CCR5 Antibody - Images



Western blot analysis of CCR5 expression in K562 (A), MCF7 (B) whole cell lysates.

### Anti-CCR5 Antibody - Background

KLH-conjugated synthetic peptide encompassing a sequence within the C-term region of human CCR5. The exact sequence is proprietary.