

Anti-cTnI (pS23/S24) Antibody
Rabbit polyclonal antibody to cTnI (pS23/S24)
Catalog # AP61105

Specification

Anti-cTnI (pS23/S24) Antibody - Product Information

Application	WB
Primary Accession	P19429
Other Accession	P48787
Reactivity	Human, Mouse, Rat
Host	Rabbit
Clonality	Polyclonal
Calculated MW	24008

Anti-cTnI (pS23/S24) Antibody - Additional Information

Gene ID 7137

Other Names

TNNC1; Troponin I cardiac muscle; Cardiac troponin I

Target/Specificity

Recognizes endogenous levels of cTnI (pS23/S24) protein.

Dilution

WB~~WB (1/500 - 1/1000)

Format

Liquid in 0.42% Potassium phosphate, 0.87% Sodium chloride, pH 7.3, 30% glycerol, and 0.09% (W/V) sodium azide.

Storage

Store at -20 °C. Stable for 12 months from date of receipt

Anti-cTnI (pS23/S24) Antibody - Protein Information

Name TNNI3

Synonyms TNNC1

Function

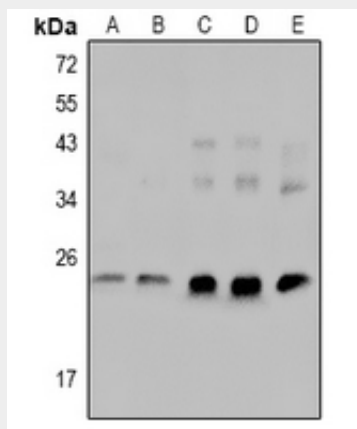
Troponin I is the inhibitory subunit of troponin, the thin filament regulatory complex which confers calcium-sensitivity to striated muscle actomyosin ATPase activity.

Anti-cTnI (pS23/S24) Antibody - Protocols

Provided below are standard protocols that you may find useful for product applications.

- [Western Blot](#)
- [Blocking Peptides](#)
- [Dot Blot](#)
- [Immunohistochemistry](#)
- [Immunofluorescence](#)
- [Immunoprecipitation](#)
- [Flow Cytometry](#)
- [Cell Culture](#)

Anti-cTnI (pS23/S24) Antibody - Images



Western blot analysis of cTnI (pS23/S24) expression in rat heart (A), H9C2 (B), A549 (C), HEK293T (D), mouse testis (E) whole cell lysates.

Anti-cTnI (pS23/S24) Antibody - Background

KLH-conjugated synthetic peptide encompassing a sequence within the N-term region of human cTnI. The exact sequence is proprietary.