

Anti-RGS19 (pS151) Antibody
Rabbit polyclonal antibody to RGS19 (pS151)
Catalog # AP61101

Specification

Anti-RGS19 (pS151) Antibody - Product Information

Application	WB
Primary Accession	P49795
Other Accession	Q9CX84
Reactivity	Human, Mouse, Rat, Bovine
Host	Rabbit
Clonality	Polyclonal
Calculated MW	24636

Anti-RGS19 (pS151) Antibody - Additional Information

Gene ID 10287

Other Names

GAIP; GNAI3IP; Regulator of G-protein signaling 19; RGS19; G-alpha-interacting protein; GAIP

Target/Specificity

Recognizes endogenous levels of RGS19 (pS151) protein.

Dilution

WB~~WB (1/500 - 1/1000)

Format

Liquid in 0.42% Potassium phosphate, 0.87% Sodium chloride, pH 7.3, 30% glycerol, and 0.09% (W/V) sodium azide.

Storage

Store at -20 °C. Stable for 12 months from date of receipt

Anti-RGS19 (pS151) Antibody - Protein Information

Name RGS19

Synonyms GAIP, GNAI3IP

Function

Inhibits signal transduction by increasing the GTPase activity of G protein alpha subunits thereby driving them into their inactive GDP-bound form. Binds to G-alpha subfamily 1 members, with the order G(i)a3 > G(i)a1 > G(o)a >> G(z)a/G(i)a2. Activity on G(z)-alpha is inhibited by phosphorylation and palmitoylation of the G-protein.

Cellular Location

Membrane; Lipid-anchor.

Tissue Location

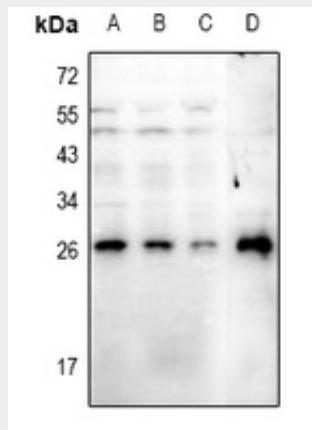
Highest expression in lung. Placenta, liver and heart also express high levels of GAIP

Anti-RGS19 (pS151) Antibody - Protocols

Provided below are standard protocols that you may find useful for product applications.

- [Western Blot](#)
- [Blocking Peptides](#)
- [Dot Blot](#)
- [Immunohistochemistry](#)
- [Immunofluorescence](#)
- [Immunoprecipitation](#)
- [Flow Cytometry](#)
- [Cell Culture](#)

Anti-RGS19 (pS151) Antibody - Images



Western blot analysis of RGS19 (pS151) expression in A549 (A), H1792 (B), HepG2 (C), rat heart (D) whole cell lysates.

Anti-RGS19 (pS151) Antibody - Background

KLH-conjugated synthetic peptide encompassing a sequence within the center region of human RGS19. The exact sequence is proprietary.