

**Anti-Cyclin D1 (pT288) Antibody**  
Rabbit polyclonal antibody to Cyclin D1 (pT288)  
Catalog # AP61099

## Specification

---

### Anti-Cyclin D1 (pT288) Antibody - Product Information

Application	WB
Primary Accession	<a href="#">P24385</a>
Other Accession	<a href="#">P25322</a>
Reactivity	Human, Mouse, Rat
Host	Rabbit
Clonality	Polyclonal
Calculated MW	33729

### Anti-Cyclin D1 (pT288) Antibody - Additional Information

Gene ID 595

#### Other Names

BCL1; PRAD1; G1/S-specific cyclin-D1; B-cell lymphoma 1 protein; BCL-1; BCL-1 oncogene; PRAD1 oncogene

#### Target/Specificity

Recognizes endogenous levels of Cyclin D1 (pT288) protein.

#### Dilution

WB~~WB (1/500 - 1/1000)

#### Format

Liquid in 0.42% Potassium phosphate, 0.87% Sodium chloride, pH 7.3, 30% glycerol, and 0.09% (W/V) sodium azide.

#### Storage

Store at -20 °C. Stable for 12 months from date of receipt

### Anti-Cyclin D1 (pT288) Antibody - Protein Information

**Name** CCND1 {ECO:0000303|PubMed:8204893, ECO:0000312|HGNC:HGNC:1582}

#### Function

Regulatory component of the cyclin D1-CDK4 (DC) complex that phosphorylates and inhibits members of the retinoblastoma (RB) protein family including RB1 and regulates the cell-cycle during G(1)/S transition (PubMed: [1827756](http://www.uniprot.org/citations/1827756), PubMed: [1833066](http://www.uniprot.org/citations/1833066), PubMed: [19412162](http://www.uniprot.org/citations/19412162), PubMed: [33854235](http://www.uniprot.org/citations/33854235), PubMed: [8114739](http://www.uniprot.org/citations/8114739), PubMed: [8302605](http://www.uniprot.org/citations/8302605))

target="\_blank">8302605</a>). Phosphorylation of RB1 allows dissociation of the transcription factor E2F from the RB/E2F complex and the subsequent transcription of E2F target genes which are responsible for the progression through the G(1) phase (PubMed:<a href="http://www.uniprot.org/citations/1827756" target="\_blank">1827756</a>, PubMed:<a href="http://www.uniprot.org/citations/1833066" target="\_blank">1833066</a>, PubMed:<a href="http://www.uniprot.org/citations/19412162" target="\_blank">19412162</a>, PubMed:<a href="http://www.uniprot.org/citations/8114739" target="\_blank">8114739</a>, PubMed:<a href="http://www.uniprot.org/citations/8302605" target="\_blank">8302605</a>). Hypophosphorylates RB1 in early G(1) phase (PubMed:<a href="http://www.uniprot.org/citations/1827756" target="\_blank">1827756</a>, PubMed:<a href="http://www.uniprot.org/citations/1833066" target="\_blank">1833066</a>, PubMed:<a href="http://www.uniprot.org/citations/19412162" target="\_blank">19412162</a>, PubMed:<a href="http://www.uniprot.org/citations/8114739" target="\_blank">8114739</a>, PubMed:<a href="http://www.uniprot.org/citations/8302605" target="\_blank">8302605</a>). Cyclin D-CDK4 complexes are major integrators of various mitogenic and antimitogenic signals (PubMed:<a href="http://www.uniprot.org/citations/1827756" target="\_blank">1827756</a>, PubMed:<a href="http://www.uniprot.org/citations/1833066" target="\_blank">1833066</a>, PubMed:<a href="http://www.uniprot.org/citations/19412162" target="\_blank">19412162</a>, PubMed:<a href="http://www.uniprot.org/citations/8302605" target="\_blank">8302605</a>). Also a substrate for SMAD3, phosphorylating SMAD3 in a cell-cycle-dependent manner and repressing its transcriptional activity (PubMed:<a href="http://www.uniprot.org/citations/15241418" target="\_blank">15241418</a>). Component of the ternary complex, cyclin D1/CDK4/CDKN1B, required for nuclear translocation and activity of the cyclin D-CDK4 complex (PubMed:<a href="http://www.uniprot.org/citations/9106657" target="\_blank">9106657</a>). Exhibits transcriptional corepressor activity with INSM1 on the NEUROD1 and INS promoters in a cell cycle-independent manner (PubMed:<a href="http://www.uniprot.org/citations/16569215" target="\_blank">16569215</a>, PubMed:<a href="http://www.uniprot.org/citations/18417529" target="\_blank">18417529</a>).

#### Cellular Location

Nucleus. Cytoplasm Nucleus membrane. Note=Cyclin D-CDK4 complexes accumulate at the nuclear membrane and are then translocated to the nucleus through interaction with KIP/CIP family members

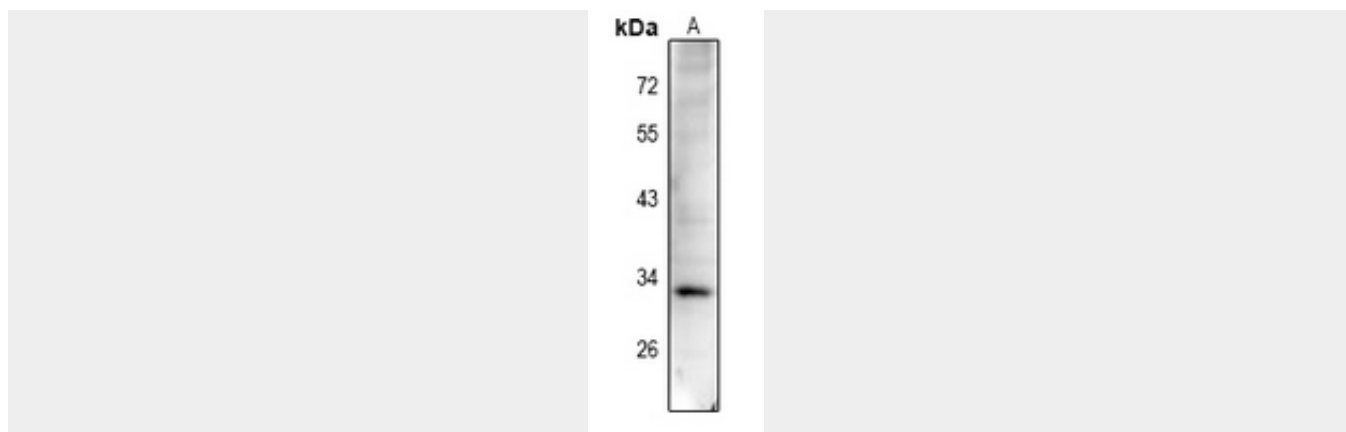
#### Anti-Cyclin D1 (pT288) Antibody - Protocols

Provided below are standard protocols that you may find useful for product applications.

- [Western Blot](#)
- [Blocking Peptides](#)
- [Dot Blot](#)
- [Immunohistochemistry](#)
- [Immunofluorescence](#)
- [Immunoprecipitation](#)
- [Flow Cytometry](#)
- [Cell Culture](#)

#### Anti-Cyclin D1 (pT288) Antibody - Images





Western blot analysis of Cyclin D1 (pT288) expression in HCT116 (A) whole cell lysates.

#### **Anti-Cyclin D1 (pT288) Antibody - Background**

KLH-conjugated synthetic peptide encompassing a sequence within the C-term region of human Cyclin D1. The exact sequence is proprietary.