

Anti-Vimentin (pS39) Antibody
Rabbit polyclonal antibody to Vimentin (pS39)
Catalog # AP61096**Specification**

Anti-Vimentin (pS39) Antibody - Product Information

Application	WB, E
Primary Accession	P08670
Other Accession	P20152
Reactivity	Human, Mouse, Rat, Pig, Bovine, SARS
Host	Rabbit
Clonality	Polyclonal
Calculated MW	53652

Anti-Vimentin (pS39) Antibody - Additional Information**Gene ID** 7431**Other Names**

Vimentin

Target/Specificity

Recognizes endogenous levels of Vimentin (pS39) protein.

Dilution

WB~~WB (1/500 - 1/1000)

E~~WB (1/500 - 1/1000)

Format

Liquid in 0.42% Potassium phosphate, 0.87% Sodium chloride, pH 7.3, 30% glycerol, and 0.09% (W/V) sodium azide.

Storage

Store at -20 °C. Stable for 12 months from date of receipt

Anti-Vimentin (pS39) Antibody - Protein Information**Name** VIM ([HGNC:12692](#))**Function**

Vimentins are class-III intermediate filaments found in various non-epithelial cells, especially mesenchymal cells. Vimentin is attached to the nucleus, endoplasmic reticulum, and mitochondria, either laterally or terminally. Plays a role in cell directional movement, orientation, cell sheet organization and Golgi complex polarization at the cell migration front (By similarity). Protects SCRIB from proteasomal degradation and facilitates its localization to intermediate filaments in a cell contact-mediated manner (By similarity).

Cellular Location

Cytoplasm. Cytoplasm, cytoskeleton. Nucleus matrix {ECO:0000250|UniProtKB:P31000}. Cell membrane {ECO:0000250|UniProtKB:P20152}

Tissue Location

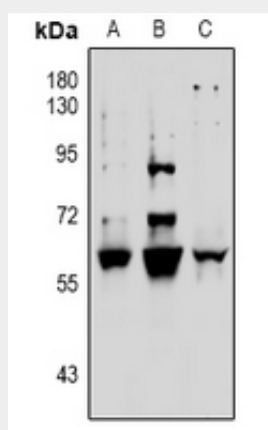
Highly expressed in fibroblasts, some expression in T- and B-lymphocytes, and little or no expression in Burkitt's lymphoma cell lines. Expressed in many hormone-independent mammary carcinoma cell lines.

Anti-Vimentin (pS39) Antibody - Protocols

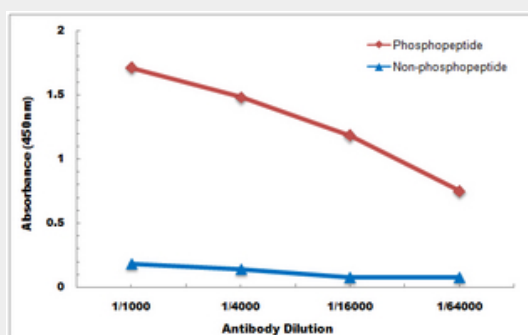
Provided below are standard protocols that you may find useful for product applications.

- [Western Blot](#)
- [Blocking Peptides](#)
- [Dot Blot](#)
- [Immunohistochemistry](#)
- [Immunofluorescence](#)
- [Immunoprecipitation](#)
- [Flow Cytometry](#)
- [Cell Culture](#)

Anti-Vimentin (pS39) Antibody - Images



Western blot analysis of Vimentin (pS39) expression in PMVEC (A), A2780 (B), NIH3T3L1 (C) whole cell lysates.



Direct ELISA antibody dose-response curve using Anti-Vimentin (pS39) Antibody. Antigen (phosphopeptide and non-phosphopeptide) concentration is 5 ug/ml. Goat Anti-Rabbit IgG (H&L) - HRP was used as the secondary antibody, and signal was developed by TMB substrate.

Anti-Vimentin (pS39) Antibody - Background

KLH-conjugated synthetic peptide encompassing a sequence within the N-term region of human Vimentin. The exact sequence is proprietary.